



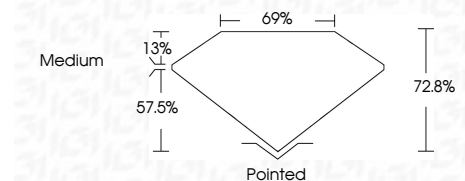
ELECTRONIC COPY

LG741588945
Report verification at igi.org



October 11, 2025
IGI Report Number LG741588945
Description LABORATORY GROWN DIAMOND
Shape and Cutting Style PRINCESS CUT
Measurements 8.37 X 8.30 X 6.04 MM

GRADING RESULTS
Carat Weight 3.54 CARATS
Color Grade E
Clarity Grade VS 1



ADDITIONAL GRADING INFORMATION
Polish EXCELLENT
Symmetry VERY GOOD
Fluorescence NONE
Inscription(s) LG741588945
Comments: This Laboratory Grown Diamond was created by Chemical Vapor Deposition (CVD) growth process. Type IIa



October 11, 2025
IGI Report No LG741588945
PRINCESS CUT
3.54 CARATS E
8.37 X 8.30 X 6.04 MM
Carat Weight
Color Grade
Clarity Grade VS 1
Depth 72.8%
Table 69%
Girdle Medium
Pointed
EXCELLENT
VERY GOOD
NONE
Inscription(s) LG741588945
Comments: This Laboratory Grown Diamond was created by Chemical Vapor Deposition (CVD) growth process. Type IIa

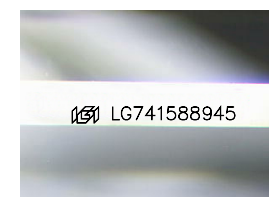
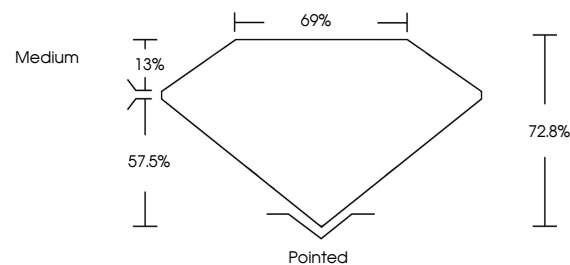
October 11, 2025
IGI Report Number LG741588945
Description LABORATORY GROWN DIAMOND
Shape and Cutting Style PRINCESS CUT
Measurements 8.37 X 8.30 X 6.04 MM

GRADING RESULTS
Carat Weight 3.54 CARATS
Color Grade E
Clarity Grade VS 1

ADDITIONAL GRADING INFORMATION
Polish EXCELLENT
Symmetry VERY GOOD
Fluorescence NONE
Inscription(s) LG741588945

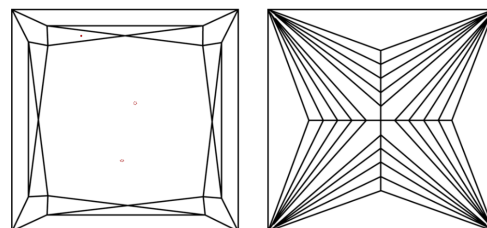
Comments: This Laboratory Grown Diamond was created by Chemical Vapor Deposition (CVD) growth process. Type IIa

PROPORTIONS



Sample Image Used

CLARITY CHARACTERISTICS



KEY TO SYMBOLS

Red symbols indicate internal characteristics.
Green symbols indicate external characteristics.

COLOR

D E F G H I J Faint Very Light Light

CLARITY

FL IF VS 1-2 VS 2-3 SI 1-2 I 1-3
Flawless Internally Flawless Very Very Slightly Included Very Slightly Included Slightly Included Included