



ELECTRONIC COPY

LABORATORY GROWN DIAMOND REPORT

October 15, 2025	
IGI Report Number	LG741587603
Description	LABORATORY GROWN DIAMOND
Shape and Cutting Style	ROUND BRILLIANT
Measurements	9.19 - 9.24 X 5.69 MM

GRADING RESULTS

Carat Weight	2.98 CARATS
Color Grade	D
Clarity Grade	INTERNALLY FLAWLESS
Cut Grade	IDEAL

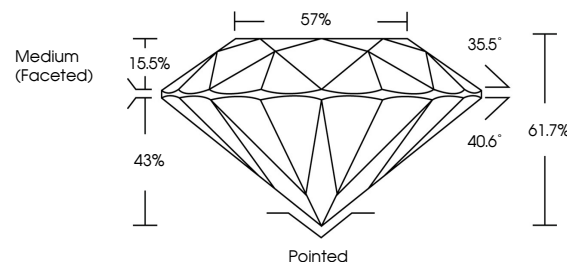
ADDITIONAL GRADING INFORMATION

Polish	EXCELLENT
Symmetry	EXCELLENT
Fluorescence	NONE
Inscription(s)	 LG741587603

Comments: HEARTS & ARROWS
As Grown - No indication of post-growth treatment.
This Laboratory Grown Diamond was created by High
Pressure High Temperature (HPHT) growth process.
Type II

LG741587603
Report verification at igi.org

PROPORTIONS



CLARITY CHARACTERISTICS

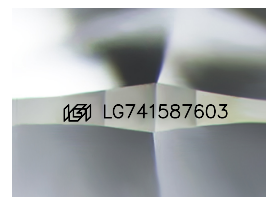


KEY TO SYMBOLS

Red symbols indicate internal characteristics.
Green symbols indicate external characteristics.



www.igi.org



Sample Image Used

COLOR

D E F G H I J Faint Very Light Light

CLARITY

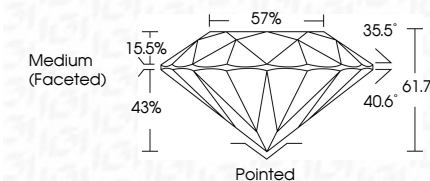
FL	IF	VVS ¹⁻²	VS ¹⁻²	SI ¹⁻²	I ¹⁻³
Flawless	Internally Flawless	Very Very Slightly Included	Very Slightly Included	Slightly Included	Included



October 15, 2025	
IGI Report Number	LG741587603
Description	LABORATORY GROWN DIAMOND
Shape and Cutting Style	ROUND BRILLIANT
Measurements	9.19 - 9.24 X 5.69 MM

GRADING RESULTS

Carat Weight	2.98 CARATS
Color Grade	D
Clarity Grade	INTERNALLY FLAWLESS
Cut Grade	IDEAL



ADDITIONAL GRADING INFORMATION

Polish	EXCELLENT
Symmetry	EXCELLENT
Fluorescence	NONE
Inscription(s)	 LG741587603
Comments: HEARTS & ARROWS	
As Grown - No indication of post-growth treatment.	
This Laboratory Grown Diamond was created by High Pressure High Temperature (HPHT) growth process.	
Type II	



	October 15, 2025	
	GRI Report No. LG741897603	
	STAINLESS STEEL GI REPORT NO.	
	19 - 19 - 924 X 5.69 MM	
	Carat Weight	2.08 CARATS
	Color Grade	D
	Clarity Grade	I _F
	Cut Grade	IDEAL
	Depth	61.7%
	Table	57%
	Girdle	Medium (Faceted)
	Quet	Poished
	Polish	EXCELLENT
	Symmetry	EXCELLENT
	Fluorescence	NONE
	Inscription(s)	(G) LG741897603
	Comments:	
	As Grown - AS SHOWN	
	No Indication of post-growth treatment.	
	The Laboratory Crown Diamond was created by High Pressure High Temperature (HPHT) growth process.	



THIS DOCUMENT WAS PRODUCED WITH THE FOLLOWING SECURITY MEASURES: SPECIAL DOCUMENT PAPER, INK SCREENS, WATERMARK, BACKGROUND DESIGNS, HOLOGRAM AND OTHER SECURITY FEATURES NOT LISTED AND DO EXCEED DOCUMENT SECURITY INDUSTRY GUIDELINES