



# INTERNATIONAL GEMOLOGICAL INSTITUTE

ELECTRONIC COPY

## LABORATORY GROWN DIAMOND REPORT

October 14, 2025

IGI Report Number

LG741586942

Description

LABORATORY GROWN DIAMOND

Shape and Cutting Style

HEART MODIFIED BRILLIANT

Measurements

4.94 X 5.57 X 3.00 MM

### GRADING RESULTS

Carat Weight

0.64 CARAT

Color Grade

FANCY VIVID PINK

Clarity Grade

VVS 2

### ADDITIONAL GRADING INFORMATION

Polish

VERY GOOD

Symmetry

VERY GOOD

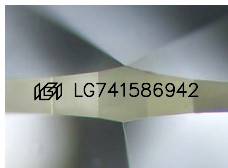
Fluorescence

SLIGHT

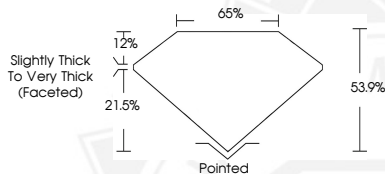
Inscription(s)

IGI LG741586942

Comments: This Laboratory Grown Diamond was created by Chemical Vapor Deposition (CVD) growth process. Indications of post-growth treatment.



Sample Image Used



October 14, 2025

IGI Report Number LG741586942

HEART MODIFIED BRILLIANT

LABORATORY GROWN DIAMOND

4.94 X 5.57 X 3.00 MM

Carat Weight 0.64 CARAT

Color Grade FANCY VIVID PINK

Clarity Grade VVS 2

Polish VERY GOOD

Symmetry VERY GOOD

Fluorescence SLIGHT

Inscription(s) IGI LG741586942

Comments: This Laboratory Grown Diamond was created by Chemical Vapor Deposition (CVD) growth process. Indications of post-growth treatment.



October 14, 2025

IGI Report Number LG741586942

HEART MODIFIED BRILLIANT

LABORATORY GROWN DIAMOND

4.94 X 5.57 X 3.00 MM

Carat Weight 0.64 CARAT

Color Grade FANCY VIVID PINK

Clarity Grade VVS 2

Polish VERY GOOD

Symmetry VERY GOOD

Fluorescence SLIGHT

Inscription(s) IGI LG741586942

Comments: This Laboratory Grown Diamond was created by Chemical Vapor Deposition (CVD) growth process. Indications of post-growth treatment.



THIS DOCUMENT WAS PRODUCED WITH THE FOLLOWING SECURITY MEASURES: SPECIAL DOCUMENT PAPER, INK SCREENS, WATERMARK, BACKGROUND DESIGNS, HOLOGRAM AND OTHER SECURITY FEATURES NOT LISTED AND DO EXCEED DOCUMENT SECURITY INDUSTRY GUIDELINES.

For terms & conditions and to verify this report, please visit [www.igi.org](http://www.igi.org)