



**INTERNATIONAL  
GEMOLOGICAL  
INSTITUTE**

**ELECTRONIC COPY**

**LABORATORY GROWN DIAMOND REPORT**

October 11, 2025  
 IGI Report Number **LG741586922**  
 Description **LABORATORY GROWN DIAMOND**  
 Shape and Cutting Style **OVAL MODIFIED BRILLIANT**  
 Measurements **6.03 X 4.19 X 2.86 MM**

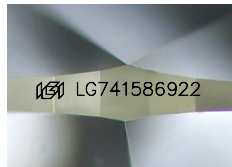
**GRADING RESULTS**

Carat Weight **0.58 CARAT**  
 Color Grade **FANCY VIVID PINK**  
 Clarity Grade **VS 1**

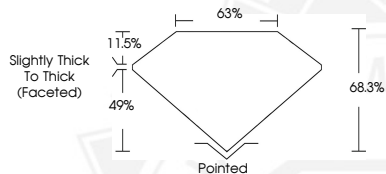
**ADDITIONAL GRADING INFORMATION**

Polish **VERY GOOD**  
 Symmetry **VERY GOOD**  
 Fluorescence **SLIGHT**  
 Inscription(s) **IGI LG741586922**

Comments: This Laboratory Grown Diamond was created by  
 Chemical Vapor Deposition (CVD) growth process.  
 Indications of post-growth treatment.



Sample Image Used



October 11, 2025  
 IGI Report Number **LG741586922**  
 OVAL MODIFIED BRILLIANT  
 LABORATORY GROWN DIAMOND  
**6.03 X 4.19 X 2.86 MM**  
 Carat Weight **0.58 CARAT**  
 Color Grade **FANCY VIVID PINK**  
 Clarity Grade **VS 1**  
 Polish **VERY GOOD**  
 Symmetry **VERY GOOD**  
 Fluorescence **SLIGHT**  
 Inscription(s) **IGI LG741586922**

Comments: This Laboratory Grown  
 Diamond was created by  
 Chemical Vapor Deposition (CVD)  
 growth process. Indications of  
 post-growth treatment.



October 11, 2025  
 IGI Report Number **LG741586922**  
 OVAL MODIFIED BRILLIANT  
 LABORATORY GROWN DIAMOND  
**6.03 X 4.19 X 2.86 MM**  
 Carat Weight **0.58 CARAT**  
 Color Grade **FANCY VIVID PINK**  
 Clarity Grade **VS 1**  
 Polish **VERY GOOD**  
 Symmetry **VERY GOOD**  
 Fluorescence **SLIGHT**  
 Inscription(s) **IGI LG741586922**

Comments: This Laboratory Grown  
 Diamond was created by  
 Chemical Vapor Deposition (CVD)  
 growth process. Indications of  
 post-growth treatment.



THIS DOCUMENT WAS PRODUCED WITH THE FOLLOWING SECURITY MEASURES: SPECIAL DOCUMENT PAPER, INK SCREENS, WATERMARK, BACKGROUND DESIGNS, HOLOGRAM AND OTHER SECURITY FEATURES NOT LISTED AND DO EXCEED DOCUMENT SECURITY INDUSTRY GUIDELINES.

For terms & conditions and to verify this report, please visit [www.igi.org](http://www.igi.org)