



October 12, 2025

IGI Report Number **LG741586802**

**ROUND BRILLIANT  
LABORATORY GROWN DIAMOND  
5.10 - 5.13 X 3.19 MM**

|                |                        |
|----------------|------------------------|
| Carat Weight   | <b>0.51 CARAT</b>      |
| Color Grade    | <b>E</b>               |
| Clarity Grade  | <b>VVS 1</b>           |
| Cut Grade      | <b>IDEAL</b>           |
| Polish         | <b>EXCELLENT</b>       |
| Symmetry       | <b>EXCELLENT</b>       |
| Fluorescence   | <b>NONE</b>            |
| Inscription(s) | <b>IGI LG741586802</b> |

Comments: As Grown - No indication of post-growth treatment. This Laboratory Grown Diamond was created by High Pressure High Temperature (HPHT) growth process. Type II

**LABORATORY GROWN DIAMOND REPORT**

October 12, 2025

IGI Report Number

**LG741586802**

Description

**LABORATORY GROWN DIAMOND**

Shape and Cutting Style

**ROUND BRILLIANT**

Measurements

**5.10 - 5.13 X 3.19 MM**

**GRADING RESULTS**

Carat Weight

**0.51 CARAT**

Color Grade

**E**

Clarity Grade

**VVS 1**

Cut Grade

**IDEAL**

**ADDITIONAL GRADING INFORMATION**

Polish

**EXCELLENT**

Symmetry

**EXCELLENT**

Fluorescence

**NONE**

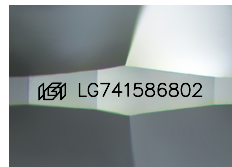
Inscription(s)

**IGI LG741586802**

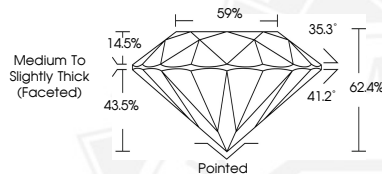
Comments: As Grown - No indication of post-growth treatment.

This Laboratory Grown Diamond was created by High Pressure High Temperature (HPHT) growth process.

Type II



Sample Image Used



October 12, 2025

IGI Report Number **LG741586802**

**ROUND BRILLIANT  
LABORATORY GROWN DIAMOND  
5.10 - 5.13 X 3.19 MM**

|                |                        |
|----------------|------------------------|
| Carat Weight   | <b>0.51 CARAT</b>      |
| Color Grade    | <b>E</b>               |
| Clarity Grade  | <b>VVS 1</b>           |
| Cut Grade      | <b>IDEAL</b>           |
| Polish         | <b>EXCELLENT</b>       |
| Symmetry       | <b>EXCELLENT</b>       |
| Fluorescence   | <b>NONE</b>            |
| Inscription(s) | <b>IGI LG741586802</b> |

Comments: As Grown - No indication of post-growth treatment. This Laboratory Grown Diamond was created by High Pressure High Temperature (HPHT) growth process. Type II



THIS DOCUMENT WAS PRODUCED WITH THE FOLLOWING SECURITY MEASURES: SPECIAL DOCUMENT PAPER, INK SCREENS, WATERMARK, BACKGROUND DESIGNS, HOLOGRAM AND OTHER SECURITY FEATURES NOT LISTED AND DO EXCEED DOCUMENT SECURITY INDUSTRY GUIDELINES.