



ELECTRONIC COPY

LABORATORY GROWN DIAMOND REPORT

October 12, 2025	
IGI Report Number	LG741585410
Description	LABORATORY GROWN DIAMOND
Shape and Cutting Style	CUT CORNERED SQUARE MODIFIED BRILLIANT
Measurements	7.05 X 6.93 X 4.77 MM

GRADING RESULTS

Carat Weight	2.25 CARATS
Color Grade	D
Clarity Grade	VVS 2

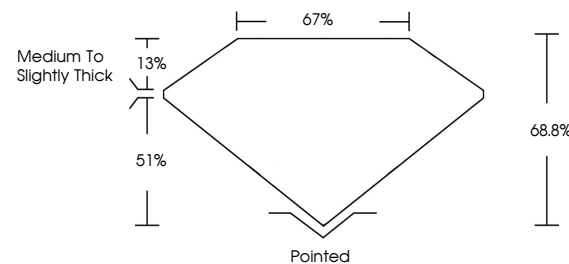
ADDITIONAL GRADING INFORMATION

Polish	EXCELLENT
Symmetry	EXCELLENT
Fluorescence	NONE
Inscription(s)	 LG741585410

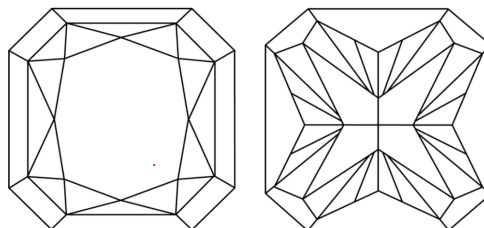
Comments: This Laboratory Grown Diamond was created by Chemical Vapor Deposition (CVD) growth process.
Type IIa

LG741585410
Report verification at lgi.org

PROPORTIONS

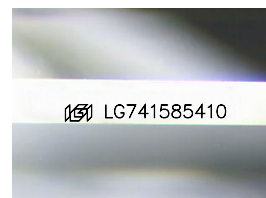


CLARITY CHARACTERISTICS



KEY TO SYMBOLS

Red symbols indicate internal characteristics.
Green symbols indicate external characteristics.



Sample Image Used

COLOR

D E F G H I J Faint Very Light Light

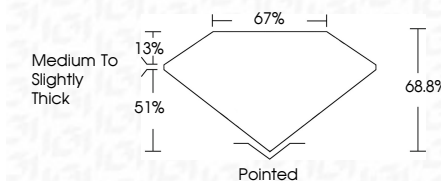
CLARITY

FL	IF	VVS ¹⁻²	VS ¹⁻²	SI ¹⁻²	I ¹⁻³
Flawless	Internally Flawless	Very Very Slightly Included	Very Slightly Included	Slightly Included	Included

LABORATORY GROWN DIAMOND REPORT



October 12, 2025	
IGI Report Number	LG741585410
Description	LABORATORY GROWN DIAMOND
Shape and Cutting Style	CUT CORNERED SQUARE MODIFIED BRILLIANT
Measurements	7.05 X 6.93 X 4.77 MM
GRADING RESULTS	
Carat Weight	2.25 CARATS
Color Grade	D
Clarity Grade	VVS 2



ADDITIONAL GRADING INFORMATION

Polish	EXCELLENT
Symmetry	EXCELLENT
Fluorescence	NONE
Inscription(s)	 LG741585410
Comments: This Laboratory Grown Diamond was created by Chemical Vapor Deposition (CVD) growth process.	
Type IIa	



© IGI 2020, International Gemological Institute

FD - 10 20

www.igi.org



THIS DOCUMENT WAS PRODUCED WITH THE FOLLOWING SECURITY MEASURES: SPECIAL DOCUMENT PAPER, INK SCREENS, WATERMARK, BACKGROUND DESIGNS, HOLOGRAM AND OTHER SECURITY FEATURES NOT LISTED AND DO EXCEED DOCUMENT SECURITY INDUSTRY GUIDELINE

October 12, 2025	GI Report No 16741565410	2.25 CARATS	VVS 2	68.9%	67%	Thick	Pointed		gem12701565410
GI Report No 16741565410	CUT CORNERED SQUARE MODIFIED						EXCELLENT		
08.05.2025	BRILLIANT						EXCELLENT		
	Carat Weight 4.693 X 4.777 MM					Medium to Slightly			
	Color Grade								
	Clarity Grade								
	Depth								
	Table								
	Girdle								
	Culet								
	Polish								
	Symmetry								
	Fluorescence								
	Comments								

Comments:
This Laboratory Grown Diamond was
created by Chemical Vapor Deposition
(CVD) growth process.