



ELECTRONIC COPY

LABORATORY GROWN DIAMOND REPORT

| | |
|-------------------------|--------------------------|
| October 11, 2025 | |
| IGI Report Number | LG741585149 |
| Description | LABORATORY GROWN DIAMOND |
| Shape and Cutting Style | ROUND BRILLIANT |
| Measurements | 8.17 - 8.19 X 4.86 MM |

GRADING RESULTS

| | |
|---------------|-------------|
| Carat Weight | 2.01 CARATS |
| Color Grade | E |
| Clarity Grade | VS 2 |
| Cut Grade | EXCELLENT |

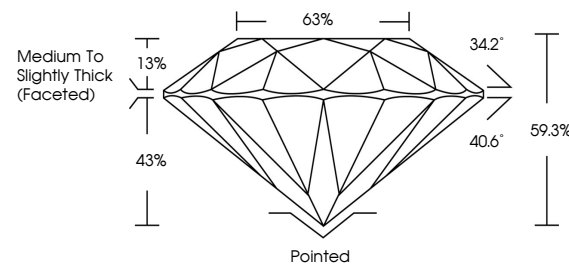
ADDITIONAL GRADING INFORMATION

| | |
|----------------|---|
| Polish | EXCELLENT |
| Symmetry | EXCELLENT |
| Fluorescence | NONE |
| Inscription(s) |  LG741585149 |

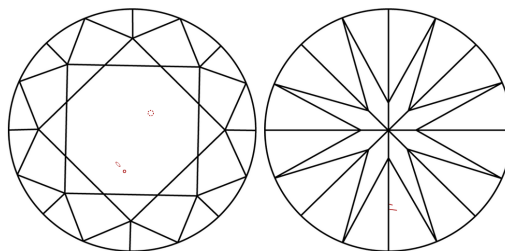
Comments: This Laboratory Grown Diamond was created by Chemical Vapor Deposition (CVD) growth process.
Type IIa

LG741585149
Report verification at igi.org

PROPORTIONS

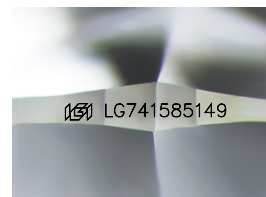


CLARITY CHARACTERISTICS



KEY TO SYMBOLS

Red symbols indicate internal characteristics.
Green symbols indicate external characteristics.



Sample Image Used

COLOR

D E F G H I J Faint Very Light Light

CLARITY

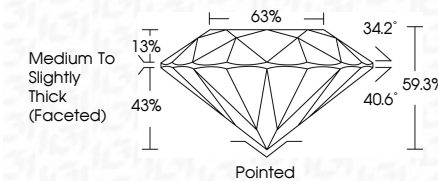
| FL | IF | VVS ¹⁻² | VS ¹⁻² | SI ¹⁻² | I ¹⁻³ |
|----------|---------------------|-----------------------------|------------------------|-------------------|------------------|
| Flawless | Internally Flawless | Very Very Slightly Included | Very Slightly Included | Slightly Included | Included |



| | |
|-------------------------|--------------------------|
| October 11, 2025 | |
| IGI Report Number | LG741585149 |
| Description | LABORATORY GROWN DIAMOND |
| Shape and Cutting Style | ROUND BRILLIANT |
| Measurements | 8.17 - 8.19 X 4.86 MM |

GRADING RESULTS

| | |
|---------------|-------------|
| Carat Weight | 2.01 CARATS |
| Color Grade | E |
| Clarity Grade | VS 2 |
| Cut Grade | EXCELLENT |



ADDITIONAL GRADING INFORMATION

| | |
|---|--|
| Polish | EXCELLENT |
| Symmetry | EXCELLENT |
| Fluorescence | NONE |
| Inscription(s) |  LG741585149 |
| <p>Comments: This Laboratory Grown Diamond was created by Chemical Vapor Deposition (CVD) growth process.</p> <p>Type IIa</p> | |



© IGI 2020, International Gemological Institute

FD - 10 20



THIS DOCUMENT WAS PRODUCED WITH THE FOLLOWING SECURITY MEASURES: SPECIAL DOCUMENT PAPER, INK SCREENS, WATERMARK, BACKGROUND DESIGNS, HOLOGRAM AND OTHER SECURITY FEATURES NOT LISTED AND DO EXCEED DOCUMENT SECURITY INDUSTRY GUIDELINES

www.igi.org

| | | |
|---------------------------|-----------------|----------------------------------|
| October 11, 2025 | Carat Weight | 2.01 CARATS |
| GL Report No. LG274585149 | Color Grade | E |
| ROUND BRILLIANT | Clarity Grade | VS 2 |
| G1.17 - 8.19 X 4.85 MM | Cut Grade | EXCELLENT |
| | Depth | 59.3% |
| | Table | 63% |
| | Grille | Medium to Slightly Thick Faceted |
| | Culet | Pointed |
| | Polish | EXCELLENT |
| | Symmetry | EXCELLENT |
| | Fluorescence | NONE |
| | Inscriptions(s) | lgf LG274585149 |

Comments: This Laboratory Grown Diamond was created by Chemical Vapor Deposition process.

Type IIc