



**ELECTRONIC COPY**

## LABORATORY GROWN DIAMOND REPORT

October 10, 2025	
IGI Report Number	LG741584168
Description	LABORATORY GROWN DIAMOND
Shape and Cutting Style	ROUND BRILLIANT
Measurements	12.59 - 12.64 X 7.31 MM

## GRADING RESULTS

Carat Weight	7.00 CARATS
Color Grade	F
Clarity Grade	VS 1
Cut Grade	EXCELLENT

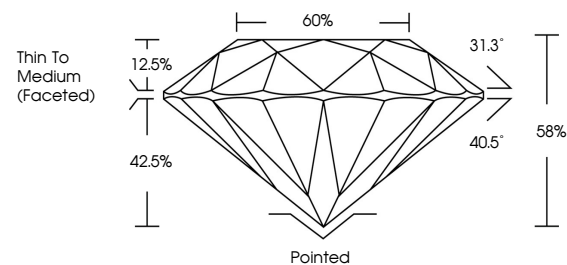
### ADDITIONAL GRADING INFORMATION

Polish	EXCELLENT
Symmetry	EXCELLENT
Fluorescence	NONE
Inscription(s)	 LG741584168

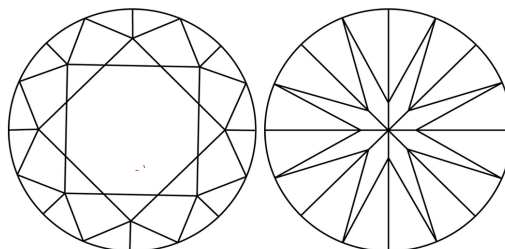
Comments: This Laboratory Grown Diamond was created by Chemical Vapor Deposition (CVD) growth process.  
Type IIa

LG741584168  
Report verification at [igi.org](https://igi.org)

## PROPORTIONS

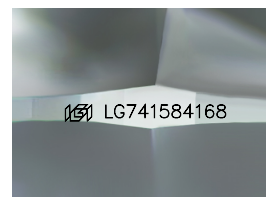


## CLARITY CHARACTERISTICS



### KEY TO SYMBOLS

Red symbols indicate internal characteristics.  
Green symbols indicate external characteristics.



Sample Image Used

## COLOR

D E F G H I J Faint Very Light Light

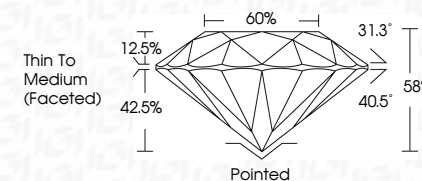
## CLARITY

FL	IF	VVS <sup>1-2</sup>	VS <sup>1-2</sup>	SI <sup>1-2</sup>	I <sup>1-3</sup>
Flawless	Internally Flawless	Very Very Slightly Included	Very Slightly Included	Slightly Included	Included

## LABORATORY GROWN DIAMOND REPORT



October 10, 2025	
IGI Report Number	LG741584168
Description	LABORATORY GROWN DIAMOND
Shape and Cutting Style	ROUND BRILLIANT
Measurements	12.59 - 12.64 X 7.31 MM
GRADING RESULTS	
Carat Weight	7.00 CARATS
Color Grade	F
Clarity Grade	VS 1
Cut Grade	EXCELLENT



### ADDITIONAL GRADING INFORMATION

Polish	EXCELLENT
Symmetry	EXCELLENT
Fluorescence	NONE
Inscription(s)	 LG741584168
Comments: This Laboratory Grown Diamond was created by Chemical Vapor Deposition (CVD) growth process. Type IIa	



© IGI 2020, International Gemological Institute

FD - 10 20



THIS DOCUMENT WAS PRODUCED WITH THE FOLLOWING SECURITY MEASURES: SPECIAL DOCUMENT PAPER, INK SCREENS, WATERMARK, BACKGROUND DESIGNS, HOLOGRAM AND OTHER SECURITY FEATURES NOT LISTED AND DO EXCEED DOCUMENT SECURITY INDUSTRY GUIDELINES

**www.igi.org**

October 10, 2025  
 CGI Report No LG741584168  
 BOUND BRILLIANT

<b>12.69 - 12.64 X 7.31 MM</b>	<b>7.00 CARATS F</b>
Carat Weight	VSI
Color Grade	EXCELLENT
Clarity Grade	58%
Cut Grade	60%
Depth	Thin To Medium (Faceted)
Table	Poished
Girdle	EXCELLENT
Culet	Symmetry
Polish	Fluorescence
Symmetry	NONE
Fluorescence	date 12/11/2013

**Comments:**  
This Laboratory Grown Diamond was  
created by Chemical Vapor Deposition  
(CVD) growth process.