



**ELECTRONIC COPY**

LG741583784  
Report verification at [igi.org](http://igi.org)



October 14, 2025

IGI Report Number **LG741583784**

Description **LABORATORY GROWN DIAMOND**

Shape and Cutting Style **ROUND BRILLIANT**

Measurements **6.45 - 6.49 X 3.92 MM**

**GRADING RESULTS**

Carat Weight **1.02 CARAT**

Color Grade **FANCY YELLOW**

Clarity Grade **VVS 2**

Cut Grade **IDEAL**

October 14, 2025  
IGI Report Number **LG741583784**  
Description **LABORATORY GROWN DIAMOND**  
Shape and Cutting Style **ROUND BRILLIANT**  
Measurements **6.45 - 6.49 X 3.92 MM**

**GRADING RESULTS**

Carat Weight **1.02 CARAT**

Color Grade **FANCY YELLOW**

Clarity Grade **VVS 2**

Cut Grade **IDEAL**

**ADDITIONAL GRADING INFORMATION**

Polish **EXCELLENT**

Symmetry **EXCELLENT**

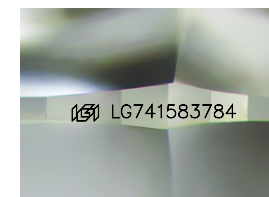
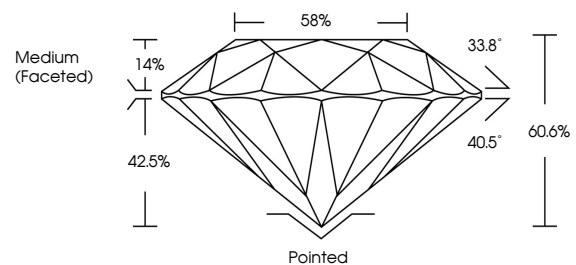
Fluorescence **NONE**

Inscription(s) **LG741583784**

Comments: This Laboratory Grown Diamond was created by Chemical Vapor Deposition (CVD) growth process.

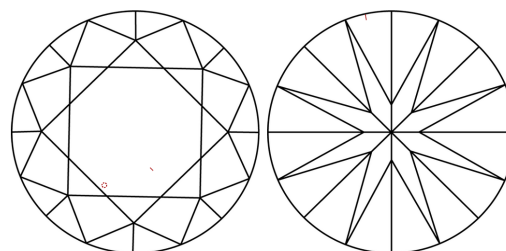
Secondary color: Grey

**PROPORTIONS**



Sample Image Used

**CLARITY CHARACTERISTICS**



**KEY TO SYMBOLS**

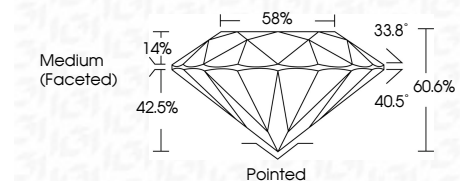
Red symbols indicate internal characteristics.  
Green symbols indicate external characteristics.

**COLOR**

D E F G H I J Faint Very Light Light

**CLARITY**

FL	IF	VVS <sup>1-2</sup>	VS <sup>1-2</sup>	SI <sup>1-2</sup>	I <sup>1-3</sup>
Flawless	Internally Flawless	Very Very Slightly Included	Very Slightly Included	Slightly Included	Included



**ADDITIONAL GRADING INFORMATION**

Polish **EXCELLENT**

Symmetry **EXCELLENT**

Fluorescence **NONE**

Inscription(s) **LG741583784**

Comments: This Laboratory Grown Diamond was created by Chemical Vapor Deposition (CVD) growth process.

Secondary color: Grey



**IGI**



October 14, 2025  
IGI Report No **LG741583784**  
**ROUND BRILLIANT**

**1.02 CARAT**  
Carat Weight  
**FANCY YELLOW**  
Color Grade  
**VVS 2**  
Clarity Grade  
**IDEAL**  
Cut Grade  
**60.6%**  
Depth  
**58%**  
Table  
Medium (Faceted)  
Grade

Pointed  
**EXCELLENT**  
Culet  
**EXCELLENT**  
Polish  
**EXCELLENT**  
Symmetry  
**EXCELLENT**  
Fluorescence  
**NONE**  
Inscription(s)  
 **LG741583784**

Comments: This Laboratory Grown Diamond was created by Chemical Vapor Deposition (CVD) growth process.  
Secondary color: Grey