



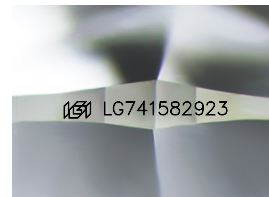
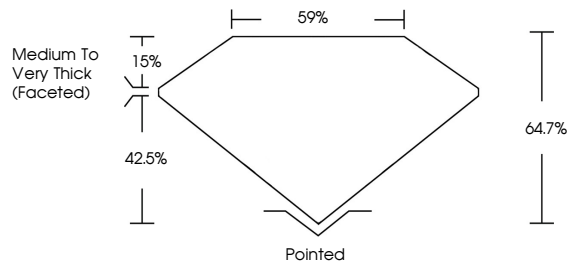
**INTERNATIONAL
GEMOLOGICAL
INSTITUTE**

ELECTRONIC COPY

LABORATORY GROWN DIAMOND REPORT

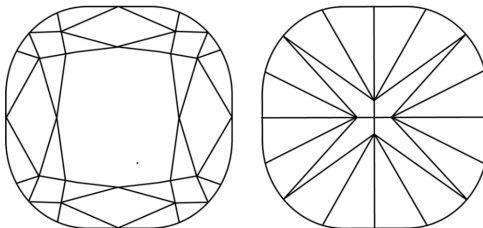
LG741582923
Report verification at [igi.org](https://www.igi.org)

PROPORTIONS



Sample Image Used

CLARITY CHARACTERISTICS



KEY TO SYMBOLS

Red symbols indicate internal characteristics.
Green symbols indicate external characteristics.

COLOR

D E F G H I J Faint Very Light Light

CLARITY

FL	IF	VVS ¹⁻²	VS ¹⁻²	SI ¹⁻²	I ¹⁻³
Flawless	Internally Flawless	Very Very Slightly Included	Very Slightly Included	Slightly Included	Included



October 12, 2025

IGI Report Number **LG741582923**

Description	LABORATORY GROWN DIAMOND
-------------	--------------------------

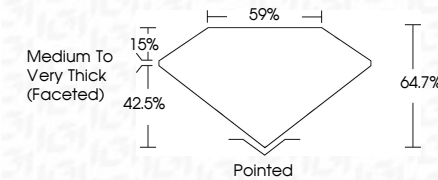
Shape and Cutting Style **SQUARE CUSHION BRILLIANT**

Measurements **8.50 X 8.48 X 5.49 MM**

GRADING RESULTS

Carat Weight **2.78 CARATS**

Color Grade **D**

Clarity Grade VVS 2

ADDITIONAL GRADING INFORMATION

Polish **EXCELLENT**Symmetry **EXCELLENT**Fluorescence **NONE**Inscription(s)  LG74158292

Comments: This Laboratory Grown Diamond was created by Chemical Vapor Deposition (CVD) growth process.
Type IIa



IG



© IGI 2020, International Gemological Institute

FD - 10 20

www.igi.org

THIS DOCUMENT WAS PRODUCED WITH THE FOLLOWING SECURITY MEASURES: SPECIAL DOCUMENT PAPER, INK SCREENS, WATERMARK, BACKGROUND DESIGNS, HOLOGRAM AND OTHER SECURITY FEATURES NOT LISTED AND DO EXCEED DOCUMENT SECURITY INDUSTRY GUIDELINES

October 12, 2025	2.78 CARATS
IGI Report No LG741852923	VVS 2
SQUARE CUSHION BRILLIANT	64.7%
	59%
6.50 X 8.48 X 5.49 MM	Medium To Very Thick (faceted)
Carat Weight	Polished
Color Grade	EXCELLENT
Clarity Grade	EXCELLENT
Depth	NONE
Table	089 LG741852923
Girdle	
Culet	
Polish	
Symmetry	
Fluorescence	
Inscriptions(s)	
Comments:	
This Laboratory Grown Diamond was created by Chemical Vapor Deposition (CVD) growth process.	
Type Ila	