



ELECTRONIC COPY

LG741582390
Report verification at igi.org



January 16, 2026

IGI Report Number **LG741582390**

Description **LABORATORY GROWN DIAMOND**

Shape and Cutting Style **ROUND BRILLIANT**

Measurements **7.64 - 7.68 X 4.64 MM**

GRADING RESULTS

Carat Weight **1.67 CARAT**

Color Grade **H**

Clarity Grade **VVS 2**

Cut Grade **IDEAL**

January 16, 2026

IGI Report Number **LG741582390**

Description **LABORATORY GROWN DIAMOND**

Shape and Cutting Style **ROUND BRILLIANT**

Measurements **7.64 - 7.68 X 4.64 MM**

GRADING RESULTS

Carat Weight **1.67 CARAT**

Color Grade **H**

Clarity Grade **VVS 2**

Cut Grade **IDEAL**

ADDITIONAL GRADING INFORMATION

Polish **EXCELLENT**

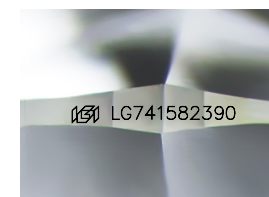
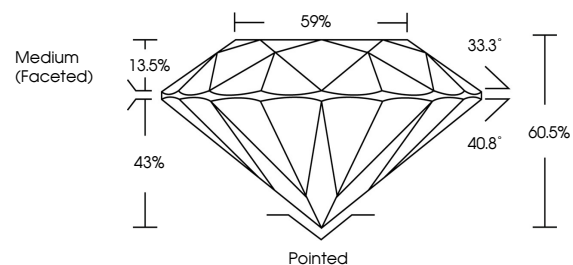
Symmetry **EXCELLENT**

Fluorescence **NONE**

Inscription(s) **LG741582390**

Comments: This Laboratory Grown Diamond was created by Chemical Vapor Deposition (CVD) growth process. Type IIa

PROPORTIONS



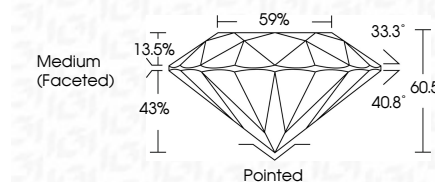
Sample Image Used

COLOR

D E F G H I J Faint Very Light Light

CLARITY

FL	IF	VVS ¹⁻²	VS ¹⁻²	SI ¹⁻²	I ¹⁻³
Flawless	Internally Flawless	Very Very Slightly Included	Very Slightly Included	Slightly Included	Included



ADDITIONAL GRADING INFORMATION

Polish **EXCELLENT**

Symmetry **EXCELLENT**

Fluorescence **NONE**

Inscription(s) **LG741582390**

Comments: This Laboratory Grown Diamond was created by Chemical Vapor Deposition (CVD) growth process. Type IIa



IGI



January 16, 2026	IGI Report No LG741582390	ROUND BRILLIANT	7.64 - 7.68 X 4.64 MM	1.67 CARAT	H	VVS 2	IDEAL	60.5%	43%	33.3°	40.8°	Pointed	EXCELLENT	EXCELLENT	NONE	LG741582390
				Carat Weight	Color Grade	Clarity Grade	Cut Grade	Depth	Table	Girdle	Medium (Faceted)	Culet	Polish	Symmetry	Fluorescence	Inscription(s)

Comments: This Laboratory Grown Diamond was created by Chemical Vapor Deposition (CVD) growth process. Type IIa