



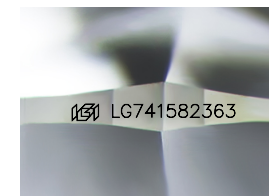
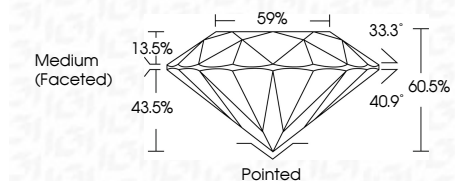
ELECTRONIC COPY

LG741582363
Report verification at igi.org

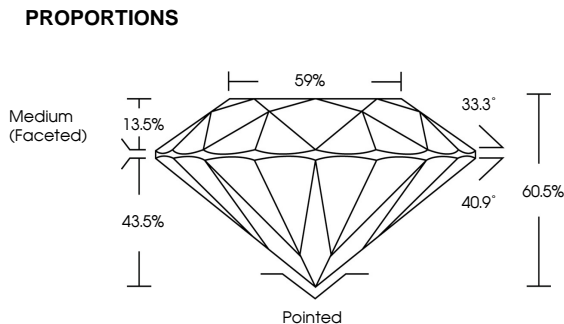


January 16, 2026
IGI Report Number **LG741582363**
Description **LABORATORY GROWN DIAMOND**
Shape and Cutting Style **ROUND BRILLIANT**
Measurements **8.51 - 8.55 X 5.16 MM**

GRADING RESULTS
Carat Weight **2.30 CARATS**
Color Grade **G**
Clarity Grade **VS 1**
Cut Grade **IDEAL**



Sample Image Used



COLOR

D E F G H I J Faint Very Light Light

CLARITY

FL	IF	VS ¹⁻²	VS ¹⁻²	SI ¹⁻²	I ¹⁻³
Flawless	Internally Flawless	Very Very Slightly Included	Very Slightly Included	Slightly Included	Included

ADDITIONAL GRADING INFORMATION

Polish **EXCELLENT**
Symmetry **EXCELLENT**
Fluorescence **NONE**
Inscription(s) **IGI LG741582363**
Comments: This Laboratory Grown Diamond was created by Chemical Vapor Deposition (CVD) growth process. Type IIa



January 16, 2026
IGI Report No LG741582363
ROUND BRILLIANT
8.51 - 8.55 X 5.16 MM
2.30 CARATS
Color Grade **G**
Clarity Grade **VS 1**
Depth **IDEAL**
Table **60.5%**
Girdle **40.9%**
Medium (Faceted)
Culet **Pointed**
Polish **EXCELLENT**
Symmetry **EXCELLENT**
Fluorescence **NONE**
Inscription(s) **IGI LG741582363**
Comments: This Laboratory Grown Diamond was created by Chemical Vapor Deposition (CVD) growth process. Type IIa