



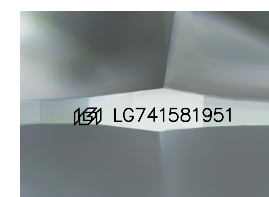
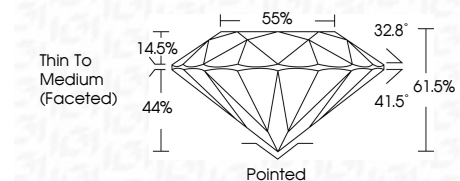
ELECTRONIC COPY

LG741581951
Report verification at igi.org



December 27, 2025
IGI Report Number LG741581951
Description LABORATORY GROWN DIAMOND
Shape and Cutting Style ROUND BRILLIANT
Measurements 8.11 - 8.15 X 5.00 MM

GRADING RESULTS
Carat Weight 1.97 CARAT
Color Grade F
Clarity Grade VVS 2
Cut Grade IDEAL



Sample Image Used

ADDITIONAL GRADING INFORMATION
Polish EXCELLENT
Symmetry EXCELLENT
Fluorescence NONE
Inscription(s) LG741581951
Comments: This Laboratory Grown Diamond was created by Chemical Vapor Deposition (CVD) growth process. Type IIa



December 27, 2025
IGI Report No LG741581951
ROUND BRILLIANT
8.11 - 8.15 X 5.00 MM
1.97 CARAT
F
VVS 2
IDEAL
61.5%
85%
Thin To Medium (Faceted)
Pointed
EXCELLENT
EXCELLENT
NONE
IGI LG741581951
Comments: This Laboratory Grown Diamond was created by Chemical Vapor Deposition (CVD) growth process. Type IIa

December 27, 2025
IGI Report Number LG741581951
Description LABORATORY GROWN DIAMOND
Shape and Cutting Style ROUND BRILLIANT
Measurements 8.11 - 8.15 X 5.00 MM
GRADING RESULTS
Carat Weight 1.97 CARAT
Color Grade F
Clarity Grade VVS 2
Cut Grade IDEAL

PROPORTIONS

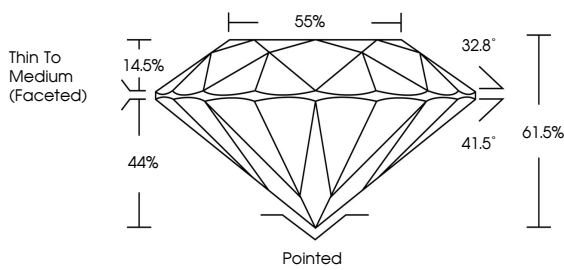


Table with 10 columns: D, E, F, G, H, I, J, Faint, Very Light, Light

Table with 6 columns: FL, IF, VS 1-2, VS 1-2, SI 1-2, I 1-3

