



ELECTRONIC COPY

LABORATORY GROWN DIAMOND REPORT

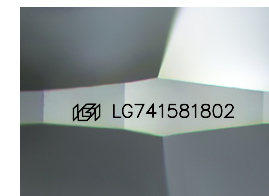
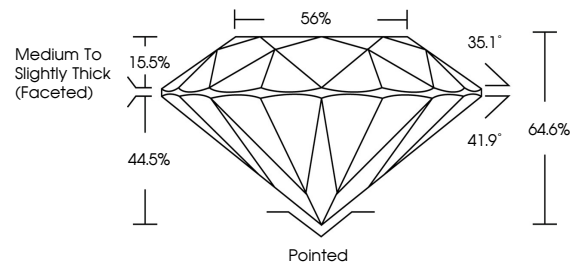
December 26, 2025
IGI Report Number LG741581802
Description LABORATORY GROWN DIAMOND
Shape and Cutting Style ROUND BRILLIANT
Measurements 7.19 - 7.22 X 4.66 MM
GRADING RESULTS
Carat Weight 1.50 CARAT
Color Grade E
Clarity Grade VVS 2
Cut Grade VERY GOOD

ADDITIONAL GRADING INFORMATION

Polish VERY GOOD
Symmetry VERY GOOD
Fluorescence NONE
Inscription(s) IGI LG741581802

Comments: This Laboratory Grown Diamond was created by Chemical Vapor Deposition (CVD) growth process. Type IIa

PROPORTIONS



Sample Image Used

COLOR

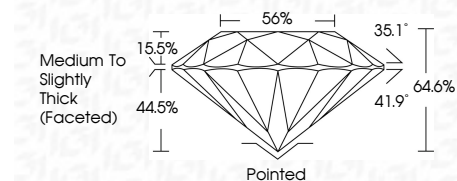
D E F G H I J Faint Very Light Light

CLARITY

FL IF VVS 1-2 VS 1-2 SI 1-2 I 1-3
Flawless Internally Flawless Very Very Slightly Included Very Slightly Included Slightly Included Included



December 26, 2025
IGI Report Number LG741581802
Description LABORATORY GROWN DIAMOND
Shape and Cutting Style ROUND BRILLIANT
Measurements 7.19 - 7.22 X 4.66 MM
GRADING RESULTS
Carat Weight 1.50 CARAT
Color Grade E
Clarity Grade VVS 2
Cut Grade VERY GOOD



ADDITIONAL GRADING INFORMATION

Polish VERY GOOD
Symmetry VERY GOOD
Fluorescence NONE
Inscription(s) IGI LG741581802
Comments: This Laboratory Grown Diamond was created by Chemical Vapor Deposition (CVD) growth process. Type IIa



December 26, 2025
IGI Report No LG741581802
ROUND BRILLIANT
1.50 CARAT E
7.19 - 7.22 X 4.66 MM
Carat Weight
Color Grade VVS 2
Clarity Grade VERY GOOD
Depth 64.6%
Table 56%
Girdle Medium To Slightly Thick (Faceted)
Culet Pointed
Polish VERY GOOD
Symmetry VERY GOOD
Fluorescence NONE
Inscription(s) IGI LG741581802
Comments: This Laboratory Grown Diamond was created by Chemical Vapor Deposition (CVD) growth process. Type IIa