



ELECTRONIC COPY

LG741580281
Report verification at igi.org



October 10, 2025

IGI Report Number **LG741580281**

Description **LABORATORY GROWN DIAMOND**

Shape and Cutting Style **CUT CORNERED
RECTANGULAR MODIFIED
BRILLIANT**

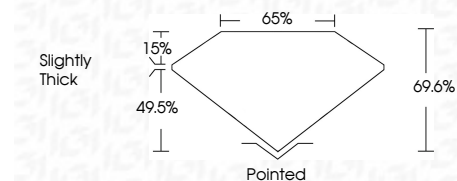
Measurements **10.17 X 6.65 X 4.63 MM**

GRADING RESULTS

Carat Weight **3.03 CARATS**

Color Grade **F**

Clarity Grade **VVS 2**



ADDITIONAL GRADING INFORMATION

Polish **EXCELLENT**

Symmetry **EXCELLENT**

Fluorescence **NONE**

Inscription(s) **IGI LG741580281**

Comments: This Laboratory Grown Diamond was created by Chemical Vapor Deposition (CVD) growth process. Type IIa



October 10, 2025	IGI Report No LG741580281	CUT CORNERED RECT. MODIFIED BRILLIANT	10.17 X 6.65 X 4.63 MM	3.03 CARATS	F	VVS 2	49.5%	65%	Slightly Thick	Pointed	EXCELLENT	EXCELLENT	NONE	IGI LG741580281
IGI	INTERNATIONAL GEMOLOGICAL INSTITUTE	1975												

Comments: This Laboratory Grown Diamond was created by Chemical Vapor Deposition (CVD) growth process. Type IIa

October 10, 2025
IGI Report Number **LG741580281**
Description **LABORATORY GROWN DIAMOND**
Shape and Cutting Style **CUT CORNERED RECTANGULAR
MODIFIED BRILLIANT**
Measurements **10.17 X 6.65 X 4.63 MM**

GRADING RESULTS

Carat Weight **3.03 CARATS**

Color Grade **F**

Clarity Grade **VVS 2**

ADDITIONAL GRADING INFORMATION

Polish **EXCELLENT**

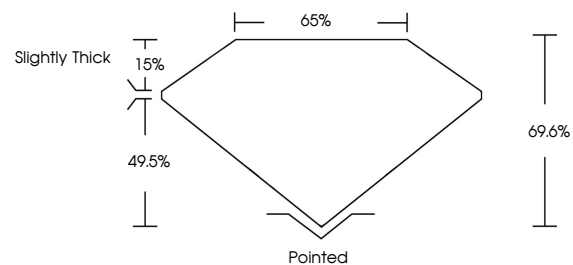
Symmetry **EXCELLENT**

Fluorescence **NONE**

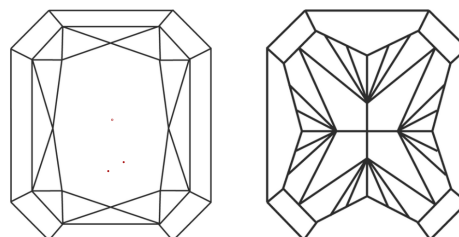
Inscription(s) **IGI LG741580281**

Comments: This Laboratory Grown Diamond was created by Chemical Vapor Deposition (CVD) growth process. Type IIa

PROPORTIONS

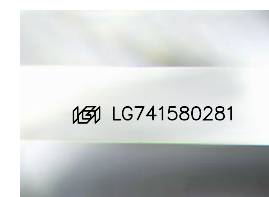


CLARITY CHARACTERISTICS



KEY TO SYMBOLS

Red symbols indicate internal characteristics.
Green symbols indicate external characteristics.



Sample Image Used

COLOR

D E F G H I J Faint Very Light Light

CLARITY

FL	IF	VVS ¹⁻²	VS ¹⁻²	SI ¹⁻²	I ¹⁻³
Flawless	Internally Flawless	Very Very Slightly Included	Very Slightly Included	Slightly Included	Included

