



**ELECTRONIC COPY**

LG741580155  
Report verification at igi.org



October 14, 2025  
IGI Report Number **LG741580155**  
Description **LABORATORY GROWN DIAMOND**  
Shape and Cutting Style **CUSHION MODIFIED BRILLIANT**  
Measurements **12.90 X 10.08 X 6.88 MM**  
**GRADING RESULTS**  
Carat Weight **8.10 CARATS**  
Color Grade **FANCY VIVID YELLOW**  
Clarity Grade **VS 2**

October 14, 2025  
IGI Report Number **LG741580155**  
Description **LABORATORY GROWN DIAMOND**  
Shape and Cutting Style **CUSHION MODIFIED BRILLIANT**  
Measurements **12.90 X 10.08 X 6.88 MM**

**GRADING RESULTS**

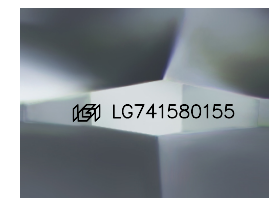
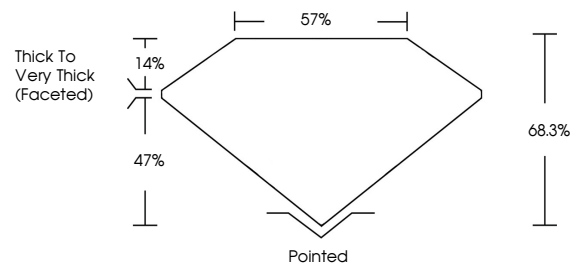
Carat Weight **8.10 CARATS**  
Color Grade **FANCY VIVID YELLOW**  
Clarity Grade **VS 2**

**ADDITIONAL GRADING INFORMATION**

Polish **EXCELLENT**  
Symmetry **EXCELLENT**  
Fluorescence **NONE**  
Inscription(s) **IGI LG741580155**

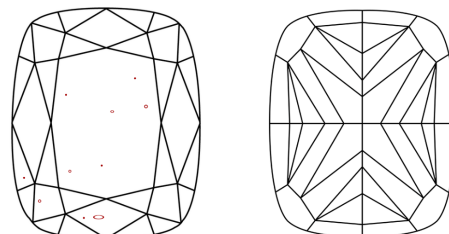
Comments: This Laboratory Grown Diamond was created by Chemical Vapor Deposition (CVD) growth process.

**PROPORTIONS**



Sample Image Used

**CLARITY CHARACTERISTICS**



**KEY TO SYMBOLS**

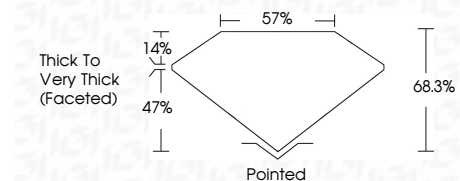
Red symbols indicate internal characteristics.  
Green symbols indicate external characteristics.

**COLOR**

D E F G H I J Faint Very Light Light

**CLARITY**

FL	IF	VS <sup>1-2</sup>	VS <sup>1-2</sup>	SI <sup>1-2</sup>	I <sup>1-3</sup>
Flawless	Internally Flawless	Very Very Slightly Included	Very Slightly Included	Slightly Included	Included



**ADDITIONAL GRADING INFORMATION**

Polish **EXCELLENT**  
Symmetry **EXCELLENT**  
Fluorescence **NONE**  
Inscription(s) **IGI LG741580155**  
Comments: This Laboratory Grown Diamond was created by Chemical Vapor Deposition (CVD) growth process.



October 14, 2025  
IGI Report No LG741580155  
**CUSHION MODIFIED BRILLIANT**  
12.90 X 10.08 X 6.88 MM  
8.10 CARATS  
FANCY VIVID YELLOW  
VS 2  
68.3%  
57%  
Thick to Very Thick (Faceted)  
Pointed  
EXCELLENT  
EXCELLENT  
NONE  
IGI LG741580155  
Comments: This Laboratory Grown Diamond was created by Chemical Vapor Deposition (CVD) growth process.