



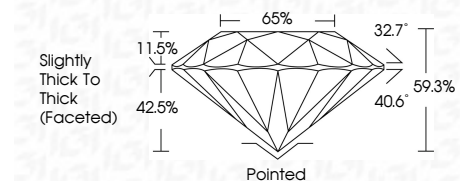
ELECTRONIC COPY

LG741576853 Report verification at igi.org



October 10, 2025 IGI Report Number LG741576853 Description LABORATORY GROWN DIAMOND Shape and Cutting Style ROUND BRILLIANT Measurements 11.61 - 11.71 X 6.92 MM

GRADING RESULTS Carat Weight 6.00 CARATS Color Grade E Clarity Grade VS 1 Cut Grade VERY GOOD



ADDITIONAL GRADING INFORMATION Polish VERY GOOD Symmetry GOOD Fluorescence NONE Inscription(s) LG741576853 Comments: This Laboratory Grown Diamond was created by Chemical Vapor Deposition (CVD) growth process. Type IIa



October 10, 2025 IGI Report No LG741576853 ROUND BRILLIANT 11.61 - 11.71 X 6.92 MM 6.00 CARATS E VS 1 VERY GOOD 65% Slightly Thick To Thick (Faceted) Pointed VERY GOOD GOOD NONE NONE LG741576853 Comments: This Laboratory Grown Diamond was created by Chemical Vapor Deposition (CVD) growth process. Type IIa

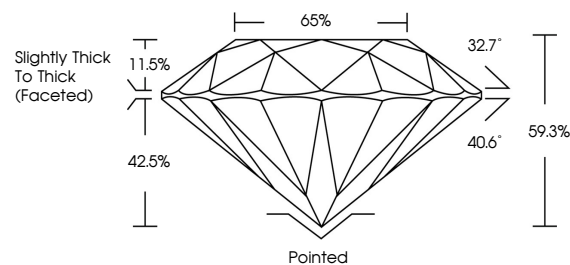
October 10, 2025 IGI Report Number LG741576853 Description LABORATORY GROWN DIAMOND Shape and Cutting Style ROUND BRILLIANT Measurements 11.61 - 11.71 X 6.92 MM

GRADING RESULTS Carat Weight 6.00 CARATS Color Grade E Clarity Grade VS 1 Cut Grade VERY GOOD

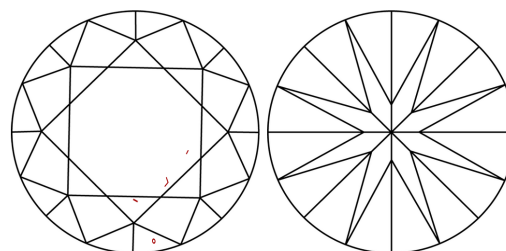
ADDITIONAL GRADING INFORMATION Polish VERY GOOD Symmetry GOOD Fluorescence NONE Inscription(s) LG741576853

Comments: This Laboratory Grown Diamond was created by Chemical Vapor Deposition (CVD) growth process. Type IIa

PROPORTIONS

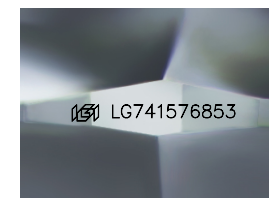


CLARITY CHARACTERISTICS



KEY TO SYMBOLS

Red symbols indicate internal characteristics. Green symbols indicate external characteristics.



Sample Image Used

COLOR

D E F G H I J Faint Very Light Light

CLARITY

FL IF VS 1-2 VS 1-2 SI 1-2 I 1-3 Flawless Internally Flawless Very Very Slightly Included Very Slightly Included Slightly Included Included

