



LABORATORY GROWN DIAMOND REPORT

October 13, 2025
 IGI Report Number **LG741576071**
 Description **LABORATORY GROWN DIAMOND**
 Shape and Cutting Style **TRIANGULAR MIXED CUT**
 Measurements **7.10 X 7.90 X 3.30 MM**

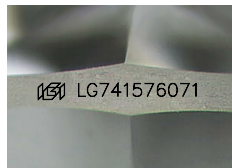
GRADING RESULTS

Carat Weight **0.78 CARAT**
 Color Grade **E**
 Clarity Grade **VS 1**

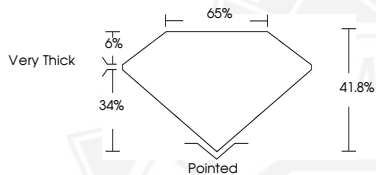
ADDITIONAL GRADING INFORMATION

Polish **VERY GOOD**
 Symmetry **VERY GOOD**
 Fluorescence **NONE**
 Inscription(s) **IGI LG741576071**

Comments: This Laboratory Grown Diamond was created by
 Chemical Vapor Deposition (CVD) growth process.
 Type IIa



Sample Image Used



October 13, 2025
 IGI Report Number **LG741576071**
 TRIANGULAR MIXED CUT
 LABORATORY GROWN DIAMOND
 7.10 X 7.90 X 3.30 MM
 Carat Weight **0.78 CARAT**
 Color Grade **E**
 Clarity Grade **VS 1**
 Polish **VERY GOOD**
 Symmetry **VERY GOOD**
 Fluorescence **NONE**
 Inscription(s) **IGI LG741576071**

Comments: This Laboratory Grown
 Diamond was created by
 Chemical Vapor Deposition (CVD)
 growth process. Type IIa



October 13, 2025
 IGI Report Number **LG741576071**
 TRIANGULAR MIXED CUT
 LABORATORY GROWN DIAMOND
 7.10 X 7.90 X 3.30 MM
 Carat Weight **0.78 CARAT**
 Color Grade **E**
 Clarity Grade **VS 1**
 Polish **VERY GOOD**
 Symmetry **VERY GOOD**
 Fluorescence **NONE**
 Inscription(s) **IGI LG741576071**

Comments: This Laboratory Grown
 Diamond was created by
 Chemical Vapor Deposition (CVD)
 growth process. Type IIa



THIS DOCUMENT WAS PRODUCED WITH THE FOLLOWING SECURITY MEASURES: SPECIAL DOCUMENT PAPER, INK SCREENS, WATERMARK, BACKGROUND DESIGNS, HOLOGRAM AND OTHER SECURITY FEATURES NOT LISTED AND DO EXCEED DOCUMENT SECURITY INDUSTRY GUIDELINES.