



LABORATORY GROWN DIAMOND REPORT

November 11, 2025
 IGI Report Number **LG741572872**
 Description **LABORATORY GROWN DIAMOND**
 Shape and Cutting Style **HEART BRILLIANT**
 Measurements **4.62 X 4.84 X 2.90 MM**

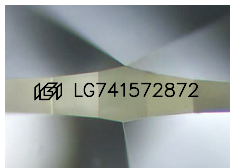
GRADING RESULTS

Carat Weight **0.36 CARAT**
 Color Grade **D**
 Clarity Grade **INTERNALLY FLAWLESS**
 Cut Grade **VERY GOOD**

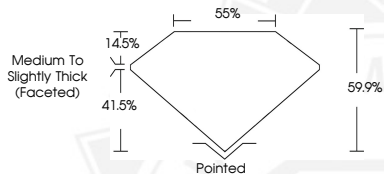
ADDITIONAL GRADING INFORMATION

Polish **EXCELLENT**
 Symmetry **EXCELLENT**
 Fluorescence **NONE**
 Inscription(s) **IGI LG741572872**

Comments: As Grown - No indication of post-growth treatment. This Laboratory Grown Diamond was created by High Pressure High Temperature (HPHT) growth process. Type II



Sample Image Used



November 11, 2025
 IGI Report Number **LG741572872**
HEART BRILLIANT
LABORATORY GROWN DIAMOND
4.62 X 4.84 X 2.90 MM
 Carat Weight **0.36 CARAT**
 Color Grade **D**
 Clarity Grade **I.F.**
 Cut Grade **VERY GOOD**
 Polish **EXCELLENT**
 Symmetry **EXCELLENT**
 Fluorescence **NONE**
 Inscription(s) **IGI LG741572872**

Comments: As Grown - No indication of post-growth treatment. This Laboratory Grown Diamond was created by High Pressure High Temperature (HPHT) growth process. Type II



November 11, 2025
 IGI Report Number **LG741572872**
HEART BRILLIANT
LABORATORY GROWN DIAMOND
4.62 X 4.84 X 2.90 MM
 Carat Weight **0.36 CARAT**
 Color Grade **D**
 Clarity Grade **I.F.**
 Cut Grade **VERY GOOD**
 Polish **EXCELLENT**
 Symmetry **EXCELLENT**
 Fluorescence **NONE**
 Inscription(s) **IGI LG741572872**

Comments: As Grown - No indication of post-growth treatment. This Laboratory Grown Diamond was created by High Pressure High Temperature (HPHT) growth process. Type II

THIS DOCUMENT WAS PRODUCED WITH THE FOLLOWING SECURITY MEASURES: SPECIAL DOCUMENT PAPER, INK SCREENS, WATERMARK, BACKGROUND DESIGNS, HOLOGRAM AND OTHER SECURITY FEATURES NOT LISTED AND DO EXCEED DOCUMENT SECURITY INDUSTRY GUIDELINES.