



ELECTRONIC COPY

LG741572067
Report verification at igi.org



October 13, 2025
IGI Report Number **LG741572067**
Description **LABORATORY GROWN DIAMOND**
Shape and Cutting Style **SQUARE CUSHION MODIFIED BRILLIANT**
Measurements **5.67 X 5.67 X 3.64 MM**
GRADING RESULTS
Carat Weight **1.05 CARAT**
Color Grade **FANCY INTENSE YELLOW**
Clarity Grade **VVS 2**

October 13, 2025
IGI Report Number **LG741572067**
Description **LABORATORY GROWN DIAMOND**
Shape and Cutting Style **SQUARE CUSHION MODIFIED BRILLIANT**
Measurements **5.67 X 5.67 X 3.64 MM**

GRADING RESULTS

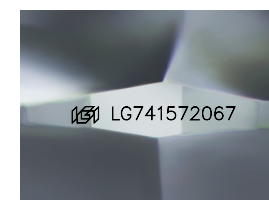
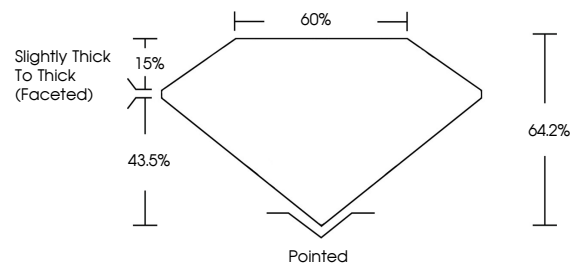
Carat Weight **1.05 CARAT**
Color Grade **FANCY INTENSE YELLOW**
Clarity Grade **VVS 2**

ADDITIONAL GRADING INFORMATION

Polish **EXCELLENT**
Symmetry **EXCELLENT**
Fluorescence **NONE**
Inscription(s) **IGI LG741572067**

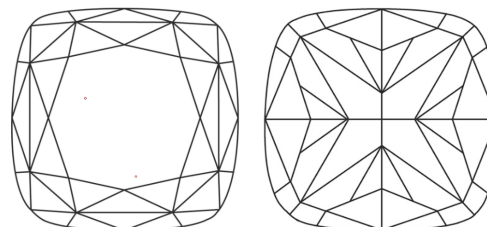
Comments: This Laboratory Grown Diamond was created by Chemical Vapor Deposition (CVD) growth process.

PROPORTIONS



Sample Image Used

CLARITY CHARACTERISTICS



KEY TO SYMBOLS

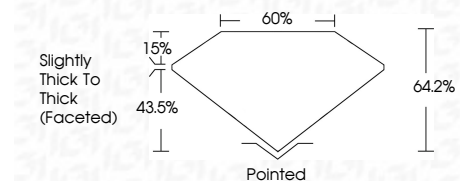
Red symbols indicate internal characteristics.
Green symbols indicate external characteristics.

COLOR

D E F G H I J Faint Very Light Light

CLARITY

FL	IF	VVS ¹⁻²	VS ¹⁻²	SI ¹⁻²	I ¹⁻³
Flawless	Internally Flawless	Very Very Slightly Included	Very Slightly Included	Slightly Included	Included



ADDITIONAL GRADING INFORMATION

Polish **EXCELLENT**
Symmetry **EXCELLENT**
Fluorescence **NONE**
Inscription(s) **IGI LG741572067**
Comments: This Laboratory Grown Diamond was created by Chemical Vapor Deposition (CVD) growth process.



October 13, 2025
IGI Report No **LG741572067**
SQUARE CUSHION MODIFIED BRILLIANT
Carat Weight **1.05 CARAT**
Color Grade **FANCY INTENSE YELLOW**
Clarity Grade **VVS 2**
Depth **43.5%**
Table **60%**
Girdle **Slightly Thick To Thick (Faceted)**
Culet **Pointed**
Polish **EXCELLENT**
Symmetry **EXCELLENT**
Fluorescence **NONE**
Inscription(s) **IGI LG741572067**
Comments: This Laboratory Grown Diamond was created by Chemical Vapor Deposition (CVD) growth process.