



**ELECTRONIC COPY**

LG741570003  
Report verification at [igi.org](http://igi.org)



October 12, 2025

IGI Report Number **LG741570003**

Description **LABORATORY GROWN DIAMOND**

Shape and Cutting Style **SQUARE CUSHION MODIFIED  
BRILLIANT**

Measurements **10.47 X 10.40 X 6.97 MM**

**GRADING RESULTS**

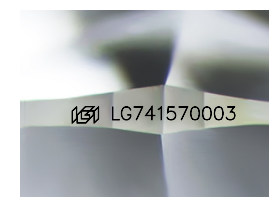
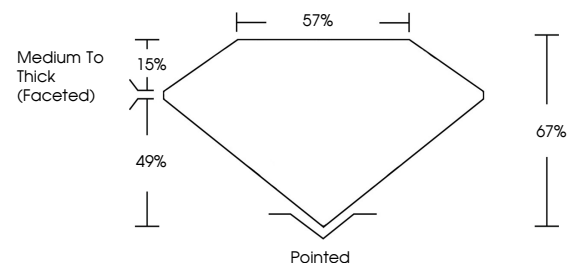
Carat Weight **5.52 CARATS**

Color Grade **E**

Clarity Grade **VS 2**

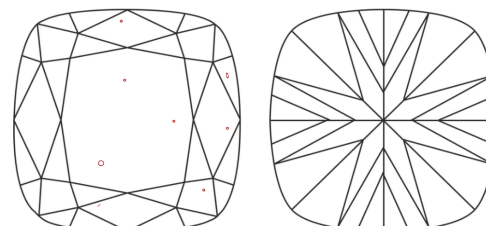
Cut Grade **EXCELLENT**

**PROPORTIONS**



Sample Image Used

**CLARITY CHARACTERISTICS**



**KEY TO SYMBOLS**

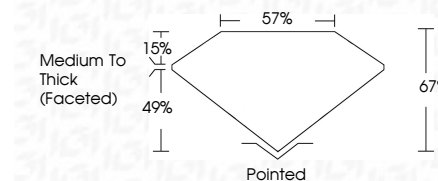
Red symbols indicate internal characteristics.  
Green symbols indicate external characteristics.

**COLOR**

D E F G H I J Faint Very Light Light

**CLARITY**

FL	IF	VS <sup>1-2</sup>	VS <sup>1-2</sup>	SI <sup>1-2</sup>	I <sup>1-3</sup>
Flawless	Internally Flawless	Very Very Slightly Included	Very Slightly Included	Slightly Included	Included



**ADDITIONAL GRADING INFORMATION**

Polish **EXCELLENT**

Symmetry **EXCELLENT**

Fluorescence **NONE**

Inscription(s) **IGI LG741570003**

Comments: This Laboratory Grown Diamond was created by Chemical Vapor Deposition (CVD) growth process. Type IIa

October 12, 2025

IGI Report Number **LG741570003**

Description **LABORATORY GROWN DIAMOND**

Shape and Cutting Style **SQUARE CUSHION MODIFIED  
BRILLIANT**

Measurements **10.47 X 10.40 X 6.97 MM**

**GRADING RESULTS**

Carat Weight **5.52 CARATS**

Color Grade **E**

Clarity Grade **VS 2**

Cut Grade **EXCELLENT**

**ADDITIONAL GRADING INFORMATION**

Polish **EXCELLENT**

Symmetry **EXCELLENT**

Fluorescence **NONE**

Inscription(s) **IGI LG741570003**

Comments: This Laboratory Grown Diamond was created by Chemical Vapor Deposition (CVD) growth process. Type IIa



**IGI**



October 12, 2025	IGI Report No LG741570003	SQUARE CUSHION MODIFIED BRILLIANT	10.47 X 10.40 X 6.97 MM	5.52 CARATS	E	VS 2	EXCELLENT	67%	67%	Medium To Thick (Faceted)	Pointed	EXCELLENT	EXCELLENT	NONE	IGI LG741570003
				Carat Weight	Color Grade	Clarity Grade	Cut Grade	Depth	Table	Girdle	Culet	Polish	Symmetry	Fluorescence	Inscription(s)

Comments: This Laboratory Grown Diamond was created by Chemical Vapor Deposition (CVD) growth process. Type IIa