



ELECTRONIC COPY

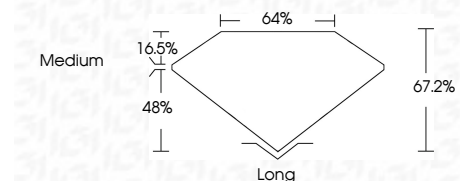
LG741562759
Report verification at igi.org



October 12, 2025
IGI Report Number **LG741562759**
Description **LABORATORY GROWN DIAMOND**
Shape and Cutting Style **EMERALD CUT**
Measurements **6.96 X 4.67 X 3.14 MM**

GRADING RESULTS

Carat Weight **1.06 CARAT**
Color Grade **H**
Clarity Grade **VVS 2**

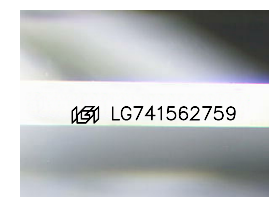


ADDITIONAL GRADING INFORMATION

Polish **EXCELLENT**
Symmetry **EXCELLENT**
Fluorescence **NONE**
Inscription(s) **IGI LG741562759**
Comments: This Laboratory Grown Diamond was created by Chemical Vapor Deposition (CVD) growth process.
Type IIa

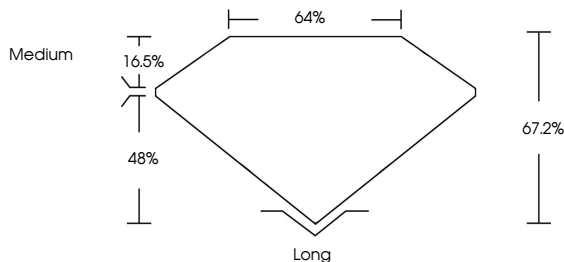


October 12, 2025
IGI Report No **LG741562759**
EMERALD CUT
6.96 X 4.67 X 3.14 MM
Carat Weight **1.06 CARAT**
Color Grade **H**
Clarity Grade **VVS 2**
Depth **16.5%**
Table **48%**
Girdle **Medium**
Culet **Long**
Polish **EXCELLENT**
Symmetry **EXCELLENT**
Fluorescence **NONE**
Inscription(s) **IGI LG741562759**
Comments: This Laboratory Grown Diamond was created by Chemical Vapor Deposition (CVD) growth process.
Type IIa

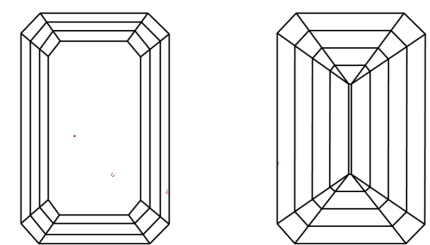


Sample Image Used

PROPORTIONS



CLARITY CHARACTERISTICS



KEY TO SYMBOLS

Red symbols indicate internal characteristics.
Green symbols indicate external characteristics.

COLOR

D	E	F	G	H	I	J	Faint	Very Light	Light
---	---	---	---	---	---	---	-------	------------	-------

CLARITY

FL	IF	VVS ¹⁻²	VS ¹⁻²	SI ¹⁻²	I ¹⁻³
Flawless	Internally Flawless	Very Very Slightly Included	Very Slightly Included	Slightly Included	Included

