



**INTERNATIONAL
GEMOLOGICAL
INSTITUTE**

ELECTRONIC COPY

LABORATORY GROWN DIAMOND REPORT

October 10, 2025
 IGI Report Number **LG741561810**
 Description **LABORATORY GROWN DIAMOND**
 Shape and Cutting Style **ROUND BRILLIANT**
 Measurements **4.83 - 4.85 X 3.01 MM**

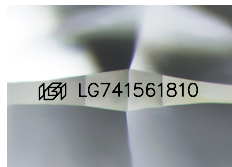
GRADING RESULTS

Carat Weight **0.44 CARAT**
 Color Grade **E**
 Clarity Grade **VVS 2**
 Cut Grade **IDEAL**

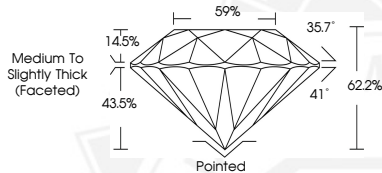
ADDITIONAL GRADING INFORMATION

Polish **EXCELLENT**
 Symmetry **EXCELLENT**
 Fluorescence **NONE**
 Inscription(s) **IGI LG741561810**

Comments: This Laboratory Grown Diamond was created by
 Chemical Vapor Deposition (CVD) growth process.
 Type IIa



Sample Image Used



October 10, 2025
 IGI Report Number **LG741561810**
ROUND BRILLIANT
LABORATORY GROWN DIAMOND
4.83 - 4.85 X 3.01 MM
 Carat Weight **0.44 CARAT**
 Color Grade **E**
 Clarity Grade **VVS 2**
 Cut Grade **IDEAL**
 Polish **EXCELLENT**
 Symmetry **EXCELLENT**
 Fluorescence **NONE**
 Inscription(s) **IGI LG741561810**

Comments: This Laboratory Grown
 Diamond was created by
 Chemical Vapor Deposition (CVD)
 growth process. Type IIa



October 10, 2025
 IGI Report Number **LG741561810**
ROUND BRILLIANT
LABORATORY GROWN DIAMOND
4.83 - 4.85 X 3.01 MM
 Carat Weight **0.44 CARAT**
 Color Grade **E**
 Clarity Grade **VVS 2**
 Cut Grade **IDEAL**
 Polish **EXCELLENT**
 Symmetry **EXCELLENT**
 Fluorescence **NONE**
 Inscription(s) **IGI LG741561810**

Comments: This Laboratory Grown
 Diamond was created by
 Chemical Vapor Deposition (CVD)
 growth process. Type IIa



THIS DOCUMENT WAS PRODUCED WITH THE FOLLOWING SECURITY MEASURES: SPECIAL DOCUMENT PAPER, INK SCREENS, WATERMARK, BACKGROUND DESIGNS, HOLOGRAM AND OTHER SECURITY FEATURES NOT LISTED AND DO EXCEED DOCUMENT SECURITY INDUSTRY GUIDELINES.

For terms & conditions and to verify this report, please visit www.igi.org