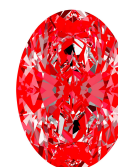




Light Performance Grade: Exceptional



Structured Light Environment Representation



COLOR

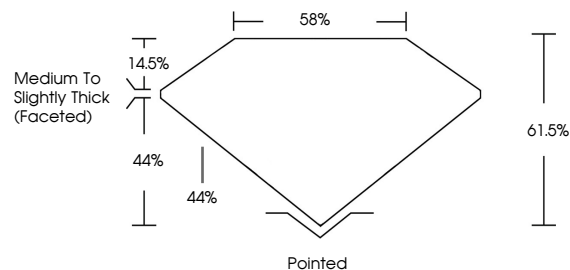


CLARITY

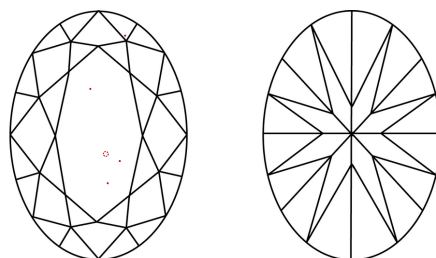


October 10, 2025
IGI Report Number LG741561538
Description LABORATORY GROWN DIAMOND
Shape and Cutting Style OVAL BRILLIANT
Measurements 12.61 X 8.52 X 5.24 MM
GRADING RESULTS
Carat Weight 3.45 CARATS
Color Grade D
Clarity Grade VVS 2

PROPORTIONS



CLARITY CHARACTERISTICS

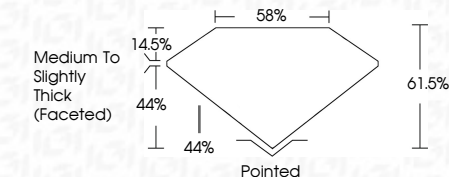


KEY TO SYMBOLS

Red symbols indicate internal characteristics.
Green symbols indicate external characteristics.



Sample Image Used



ADDITIONAL GRADING INFORMATION

Polish EXCELLENT
Symmetry EXCELLENT
Fluorescence NONE
Inscription(s) IGI LG741561538
Comments: This Laboratory Grown Diamond was created by Chemical Vapor Deposition (CVD) growth process.
Type IIa



IGI

October 10, 2025
IGI Report No LG741561538
OVAL BRILLIANT
12.61 X 8.52 X 5.24 MM
Carat Weight 3.45 CARATS
Color Grade D
Clarity Grade VVS 2
Depth 61.5%
Table 56%
Girdle Medium To Slightly Thick (Faceted)
Culet Pointed
Polish EXCELLENT
Symmetry EXCELLENT
Fluorescence NONE
Inscription(s) IGI LG741561538
Comments: This Laboratory Grown Diamond was created by Chemical Vapor Deposition (CVD) growth process.
Type IIa



ELECTRONIC COPY

LABORATORY GROWN DIAMOND REPORT

October 10, 2025
IGI Report Number LG741561538
Description LABORATORY GROWN DIAMOND
Shape and Cutting Style OVAL BRILLIANT
Measurements 12.61 x 8.52 x 5.24 mm

GRADING RESULTS

Carat Weight 3.45 CARATS
Color Grade D
Clarity Grade VVS 2

ADDITIONAL GRADING INFORMATION

Polish EXCELLENT
Symmetry EXCELLENT
Fluorescence NONE
Inscription(s) IGI LG741561538

Comments: This Laboratory Grown Diamond was created by Chemical Vapor Deposition (CVD) growth process.
Type IIa