



ELECTRONIC COPY

LG741561164
Report verification at igi.org



October 10, 2025

IGI Report Number **LG741561164**

Description **LABORATORY GROWN DIAMOND**

Shape and Cutting Style **ROUND BRILLIANT**

Measurements **9.12 - 9.17 X 5.73 MM**

GRADING RESULTS

Carat Weight **3.00 CARATS**

Color Grade **E**

Clarity Grade **VVS 1**

Cut Grade **EXCELLENT**

October 10, 2025

IGI Report Number **LG741561164**

Description **LABORATORY GROWN DIAMOND**

Shape and Cutting Style **ROUND BRILLIANT**

Measurements **9.12 - 9.17 X 5.73 MM**

GRADING RESULTS

Carat Weight **3.00 CARATS**

Color Grade **E**

Clarity Grade **VVS 1**

Cut Grade **EXCELLENT**

ADDITIONAL GRADING INFORMATION

Polish **EXCELLENT**

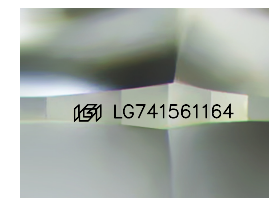
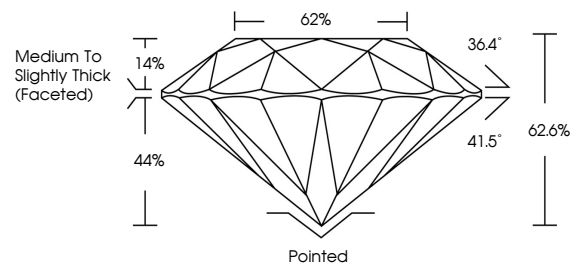
Symmetry **EXCELLENT**

Fluorescence **NONE**

Inscription(s) **LG741561164**

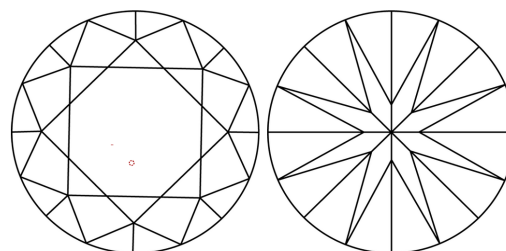
Comments: This Laboratory Grown Diamond was created by Chemical Vapor Deposition (CVD) growth process. Type IIa

PROPORTIONS



Sample Image Used

CLARITY CHARACTERISTICS



KEY TO SYMBOLS

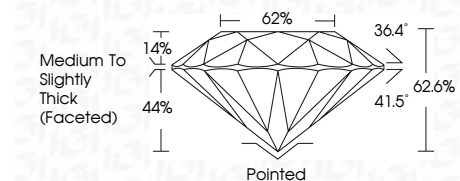
Red symbols indicate internal characteristics.
Green symbols indicate external characteristics.

COLOR

D E F G H I J Faint Very Light Light

CLARITY

FL	IF	VVS ¹⁻²	VS ¹⁻²	SI ¹⁻²	I ¹⁻³
Flawless	Internally Flawless	Very Very Slightly Included	Very Slightly Included	Slightly Included	Included



ADDITIONAL GRADING INFORMATION

Polish **EXCELLENT**

Symmetry **EXCELLENT**

Fluorescence **NONE**

Inscription(s) **LG741561164**

Comments: This Laboratory Grown Diamond was created by Chemical Vapor Deposition (CVD) growth process. Type IIa



IGI



October 10, 2025
IGI Report No LG741561164
ROUND BRILLIANT

3.00 CARATS
E

9.12 - 9.17 X 5.73 MM

Carat Weight
Color Grade
Clarity Grade
Depth
Table
Girdle

EXCELLENT
EXCELLENT
VVS 1
62.6%
62%
Medium To Slightly Thick (Faceted)

Pointed
EXCELLENT
EXCELLENT
NONE
NONE

Cut
Polish
Symmetry
Fluorescence
Inscription(s)

LG741561164

Comments: This Laboratory Grown Diamond was created by Chemical Vapor Deposition (CVD) growth process. Type IIa