



LABORATORY GROWN DIAMOND REPORT

November 14, 2025
 IGI Report Number **LG741560061**
 Description **LABORATORY GROWN DIAMOND**
 Shape and Cutting Style **TRIANGULAR MIXED CUT**
 Measurements **6.68 X 7.34 X 3.15 MM**

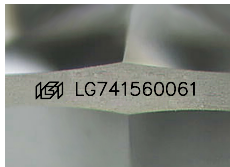
GRADING RESULTS

Carat Weight **0.68 CARAT**
 Color Grade **E**
 Clarity Grade **VVS 2**

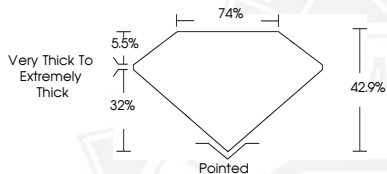
ADDITIONAL GRADING INFORMATION

Polish **VERY GOOD**
 Symmetry **VERY GOOD**
 Fluorescence **NONE**
 Inscription(s) **IGI LG741560061**

Comments: This Laboratory Grown Diamond was created by
 Chemical Vapor Deposition (CVD) growth process.
 Type IIa



Sample Image Used



November 14, 2025
 IGI Report Number **LG741560061**
 TRIANGULAR MIXED CUT
 LABORATORY GROWN DIAMOND
6.68 X 7.34 X 3.15 MM
 Carat Weight **0.68 CARAT**
 Color Grade **E**
 Clarity Grade **VVS 2**
 Polish **VERY GOOD**
 Symmetry **VERY GOOD**
 Fluorescence **NONE**
 Inscription(s) **IGI LG741560061**

Comments: This Laboratory Grown
 Diamond was created by
 Chemical Vapor Deposition (CVD)
 growth process. Type IIa



November 14, 2025
 IGI Report Number **LG741560061**
 TRIANGULAR MIXED CUT
 LABORATORY GROWN DIAMOND
6.68 X 7.34 X 3.15 MM
 Carat Weight **0.68 CARAT**
 Color Grade **E**
 Clarity Grade **VVS 2**
 Polish **VERY GOOD**
 Symmetry **VERY GOOD**
 Fluorescence **NONE**
 Inscription(s) **IGI LG741560061**

Comments: This Laboratory Grown
 Diamond was created by
 Chemical Vapor Deposition (CVD)
 growth process. Type IIa



THIS DOCUMENT WAS PRODUCED WITH THE FOLLOWING SECURITY MEASURES: SPECIAL DOCUMENT PAPER, INK SCREENS, WATERMARK, BACKGROUND DESIGNS, HOLOGRAM AND OTHER SECURITY FEATURES NOT LISTED AND DO EXCEED DOCUMENT SECURITY INDUSTRY GUIDELINES.