



ELECTRONIC COPY

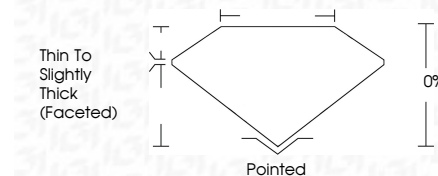
LG741559405
Report verification at igi.org



November 22, 2025
IGI Report Number **LG741559405**
Description **LABORATORY GROWN DIAMOND**
Shape and Cutting Style **FLOWER MODIFIED BRILLIANT**
Measurements **6.56 X 6.41 X 3.93 MM**

GRADING RESULTS

Carat Weight **1.15 CARAT**
Color Grade **E**
Clarity Grade **VVS 2**



ADDITIONAL GRADING INFORMATION

Polish **EXCELLENT**
Symmetry **EXCELLENT**
Fluorescence **NONE**
Inscription(s) **IGI LG741559405**
Comments: This Laboratory Grown Diamond was created by Chemical Vapor Deposition (CVD) growth process. Type IIa



November 22, 2025
IGI Report No LG741559405
FLOWER MODIFIED BRILLIANT
6.56 X 6.41 X 3.93 MM
1.15 CARAT
E
VVS 2
0%
0%
Thin To Slightly Thick (Faceted)
Pointed
EXCELLENT
EXCELLENT
NONE
IGI LG741559405
Comments: This Laboratory Grown Diamond was created by Chemical Vapor Deposition (CVD) growth process. Type IIa

LABORATORY GROWN DIAMOND REPORT

November 22, 2025
IGI Report Number **LG741559405**
Description **LABORATORY GROWN DIAMOND**
Shape and Cutting Style **FLOWER MODIFIED BRILLIANT**
Measurements **6.56 X 6.41 X 3.93 MM**

GRADING RESULTS

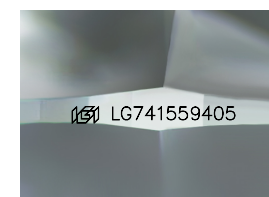
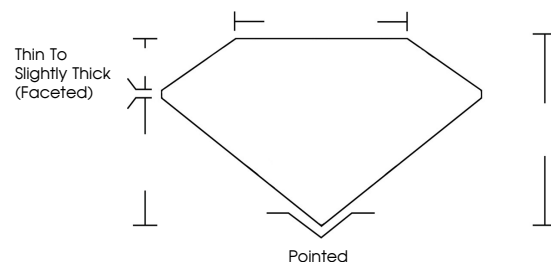
Carat Weight **1.15 CARAT**
Color Grade **E**
Clarity Grade **VVS 2**

ADDITIONAL GRADING INFORMATION

Polish **EXCELLENT**
Symmetry **EXCELLENT**
Fluorescence **NONE**
Inscription(s) **IGI LG741559405**

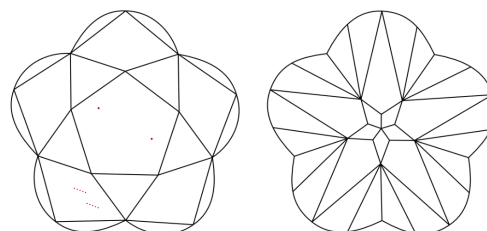
Comments: This Laboratory Grown Diamond was created by Chemical Vapor Deposition (CVD) growth process. Type IIa

PROPORTIONS



Sample Image Used

CLARITY CHARACTERISTICS



KEY TO SYMBOLS

Red symbols indicate internal characteristics.
Green symbols indicate external characteristics.

COLOR

D E F G H I J Faint Very Light Light

CLARITY

FL	IF	VVS ¹⁻²	VS ¹⁻²	SI ¹⁻²	I ¹⁻³
Flawless	Internally Flawless	Very Very Slightly Included	Very Slightly Included	Slightly Included	Included

