



**ELECTRONIC COPY**

## LABORATORY GROWN DIAMOND REPORT

LG741558713  
Report verification at [igi.org](https://igi.org)

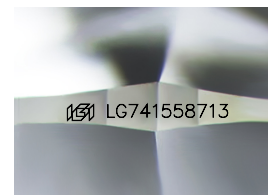
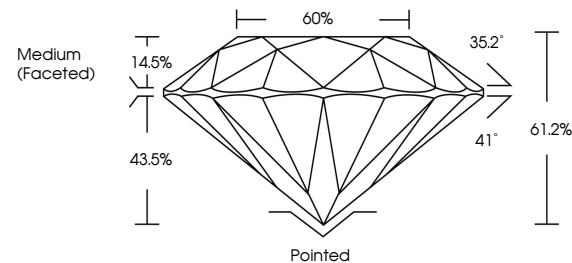
October 8, 2025	
IGI Report Number	LG741558713
Description	LABORATORY GROWN DIAMOND
Shape and Cutting Style	ROUND BRILLIANT
Measurements	8.67 - 8.71 X 5.32 MM
GRADING RESULTS	
Carat Weight	2.47 CARATS
Color Grade	E
Clarity Grade	VS 1
Cut Grade	IDEAL

### ADDITIONAL GRADING INFORMATION

Polish	EXCELLENT
Symmetry	EXCELLENT
Fluorescence	NONE
Inscription(s)	 LG741558713

Comments: This Laboratory Grown Diamond was created by Chemical Vapor Deposition (CVD) growth process.  
Type IIa

## PROPORTIONS



Sample Image Used

**COLOR**

D E F G H I J Faint Very Light Light

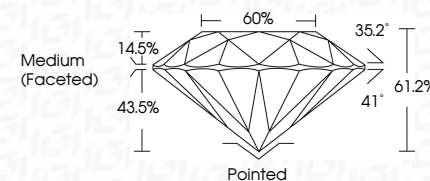
## CLARITY

FL	IF	VVS <sup>1-2</sup>	VS <sup>1-2</sup>	SI <sup>1-2</sup>	I <sup>1-3</sup>
Flawless	Internally Flawless	Very Very Slightly Included	Very Slightly Included	Slightly Included	Included


## LABORATORY GROWN DIAMOND REPORT



October 8, 2025	
IGI Report Number	LG741558713
Description	LABORATORY GROWN DIAMOND
Shape and Cutting Style	ROUND BRILLIANT
Measurements	8.67 - 8.71 X 5.32 MM
GRADING RESULTS	
Carat Weight	2.47 CARATS
Color Grade	E
Clarity Grade	VS 1
Cut Grade	IDEAL



### ADDITIONAL GRADING INFORMATION

Polish	EXCELLENT
Symmetry	EXCELLENT
Fluorescence	NONE
Inscription(s)	 LG741558713
Comments: This Laboratory Grown Diamond was created by Chemical Vapor Deposition (CVD) growth process.	
Type IIa	



© IGI 2020, International Gemological Institute

FD - 10 20



THIS DOCUMENT WAS PRODUCED WITH THE FOLLOWING SECURITY MEASURES: SPECIAL DOCUMENT PAPER, INK SCREENS, WATERMARK, BACKGROUND DESIGNS, HOLOGRAM AND OTHER SECURITY FEATURES NOT LISTED AND DO EXCEED DOCUMENT SECURITY INDUSTRY GUIDELINES

**www.igi.org**

October 8, 2025  
GI Report No LG741558713  
ROUND BRILLIANT

ROUND BRILLIANT  
8.67 - 8.71 X 5.32 MM

8.67 - 8.71 X 5.32 MM

Color Grade

Clarity Grade	VS 1
VS 1	

Cut Grade	IDEAL
Depth	61.2%

Dep III	01.2%
Table	60%

Girdle

Culet	Pointed
-------	---------

Cut	Pointed
Polish	EXCELLENT

	EXCELLENT	NONE
Symmetry		
Fluorescence		

Fluorescence	None
Inscription(s)	151 LG741558713

Comments:

**Comments:**  
This Laboratory Grown Diamond was  
created by Chemical Vapor Deposition

created by Chemical Vapor Deposition (CVD) growth process.

Type IIa