



**ELECTRONIC COPY**

LG741557761  
Report verification at igi.org



October 14, 2025

IGI Report Number **LG741557761**

Description **LABORATORY GROWN DIAMOND**

Shape and Cutting Style **PEAR BRILLIANT**

Measurements **12.71 X 8.02 X 5.04 MM**

**GRADING RESULTS**

Carat Weight **3.09 CARATS**

Color Grade **FANCY VIVID PINK**

Clarity Grade **VS 1**

October 14, 2025  
IGI Report Number **LG741557761**  
Description **LABORATORY GROWN DIAMOND**  
Shape and Cutting Style **PEAR BRILLIANT**  
Measurements **12.71 X 8.02 X 5.04 MM**

**GRADING RESULTS**

Carat Weight **3.09 CARATS**

Color Grade **FANCY VIVID PINK**

Clarity Grade **VS 1**

**ADDITIONAL GRADING INFORMATION**

Polish **EXCELLENT**

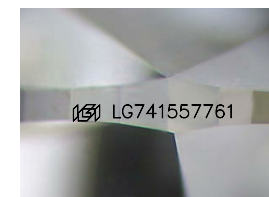
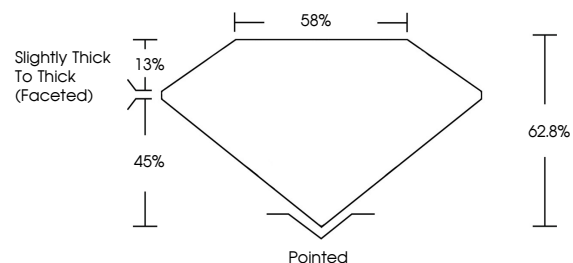
Symmetry **EXCELLENT**

Fluorescence **STRONG**

Inscription(s) **LG741557761**

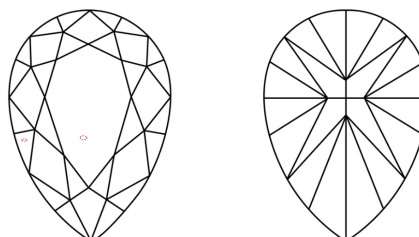
Comments: This Laboratory Grown Diamond was created by Chemical Vapor Deposition (CVD) growth process. Indications of post-growth treatment.

**PROPORTIONS**



Sample Image Used

**CLARITY CHARACTERISTICS**



**KEY TO SYMBOLS**

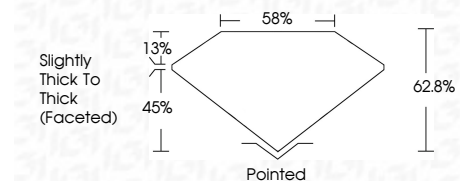
Red symbols indicate internal characteristics.  
Green symbols indicate external characteristics.

**COLOR**

D E F G H I J Faint Very Light Light

**CLARITY**

FL	IF	VS <sup>1-2</sup>	VS <sup>1-2</sup>	SI <sup>1-2</sup>	I <sup>1-3</sup>
Flawless	Internally Flawless	Very Very Slightly Included	Very Slightly Included	Slightly Included	Included



**ADDITIONAL GRADING INFORMATION**

Polish **EXCELLENT**

Symmetry **EXCELLENT**

Fluorescence **STRONG**

Inscription(s) **LG741557761**

Comments: This Laboratory Grown Diamond was created by Chemical Vapor Deposition (CVD) growth process. Indications of post-growth treatment.



October 14, 2025  
IGI Report No LG741557761  
PEAR BRILLIANT

3.09 CARATS  
Carat Weight  
FANCY VIVID PINK  
Color Grade

VS 1  
Clarity Grade  
62.8%  
Depth  
85%  
Girdle  
Slightly Thick To Thick (Faceted)

Pointed  
Culet  
EXCELLENT  
Polish  
EXCELLENT  
Symmetry  
STRONG  
Fluorescence  
STRONG  
Inscription(s)  
 LG741557761

Comments: This Laboratory Grown Diamond was created by Chemical Vapor Deposition (CVD) growth process. Indications of post-growth treatment.