



ELECTRONIC COPY

LG741557711
Report verification at igi.org



October 13, 2025

IGI Report Number **LG741557711**

Description **LABORATORY GROWN DIAMOND**

Shape and Cutting Style **ROUND BRILLIANT**

Measurements **9.51 - 9.58 X 5.75 MM**

GRADING RESULTS

Carat Weight **3.19 CARATS**

Color Grade **FANCY VIVID GREEN**

Clarity Grade **VS 1**

Cut Grade **IDEAL**

October 13, 2025

IGI Report Number **LG741557711**

Description **LABORATORY GROWN DIAMOND**

Shape and Cutting Style **ROUND BRILLIANT**

Measurements **9.51 - 9.58 X 5.75 MM**

GRADING RESULTS

Carat Weight **3.19 CARATS**

Color Grade **FANCY VIVID GREEN**

Clarity Grade **VS 1**

Cut Grade **IDEAL**

ADDITIONAL GRADING INFORMATION

Polish **EXCELLENT**

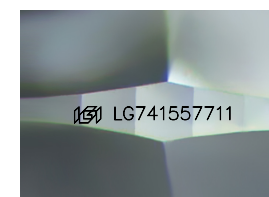
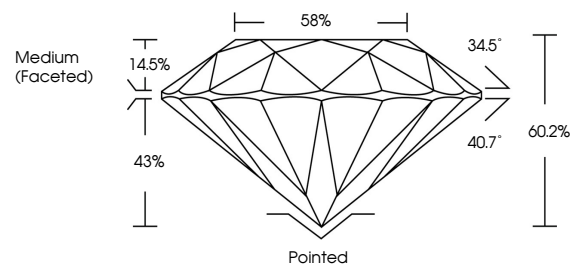
Symmetry **EXCELLENT**

Fluorescence **VERY SLIGHT**

Inscription(s) **LG741557711**

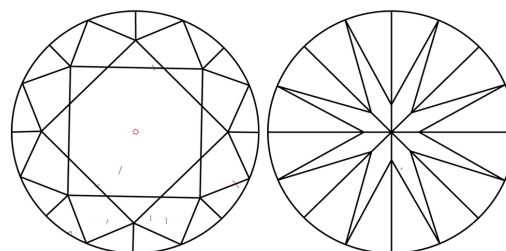
Comments: This Laboratory Grown Diamond was created by High Pressure High Temperature (HPHT) growth process. Indications of post-growth treatment.

PROPORTIONS



Sample Image Used

CLARITY CHARACTERISTICS



KEY TO SYMBOLS

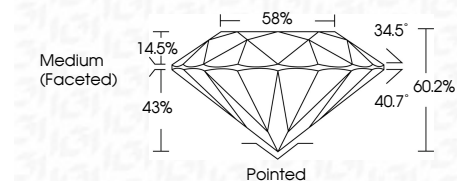
Red symbols indicate internal characteristics.
Green symbols indicate external characteristics.

COLOR

D E F G H I J Faint Very Light Light

CLARITY

FL	IF	VS ¹⁻²	VS ¹⁻²	SI ¹⁻²	I ¹⁻³
Flawless	Internally Flawless	Very Very Slightly Included	Very Slightly Included	Slightly Included	Included



ADDITIONAL GRADING INFORMATION

Polish **EXCELLENT**

Symmetry **EXCELLENT**

Fluorescence **VERY SLIGHT**

Inscription(s) **LG741557711**

Comments: This Laboratory Grown Diamond was created by High Pressure High Temperature (HPHT) growth process. Indications of post-growth treatment.



IGI



October 13, 2025
IGI Report No LG741557711
ROUND BRILLIANT

9.51 - 9.58 X 5.75 MM
3.19 CARATS
FANCY VIVID GREEN
VS 1
IDEAL
60.2%
58%
Medium (Faceted)

Pointed
EXCELLENT
EXCELLENT
VERY SLIGHT
IGI LG741557711

Comments: This Laboratory Grown Diamond was created by High Pressure High Temperature (HPHT) growth process. Indications of post-growth treatment.