

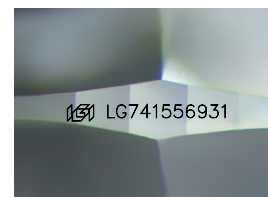
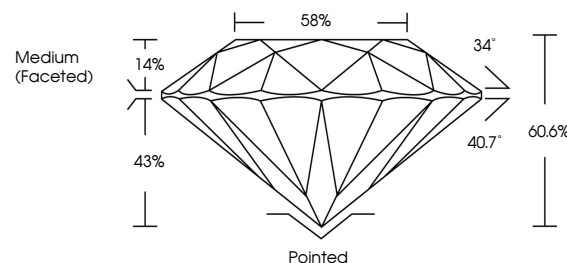


ELECTRONIC COPY

LABORATORY GROWN DIAMOND REPORT

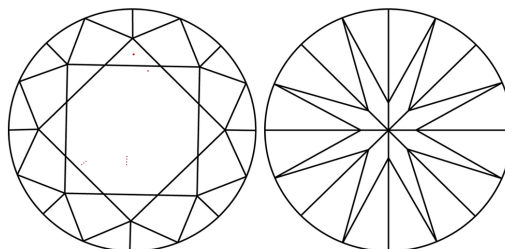
LG741556931
Report verification at igi.org

PROPORTIONS



Sample Image Used

CLARITY CHARACTERISTICS



KEY TO SYMBOLS

Red symbols indicate internal characteristics.
Green symbols indicate external characteristics.

COLOR

D E F G H I J Faint Very Light Light

CLARITY

FL	IF	VVS ¹⁻²	VS ¹⁻²	SI ¹⁻²	I ¹⁻³
Flawless	Internally Flawless	Very Very Slightly Included	Very Slightly Included	Slightly Included	Included

LABORATORY GROWN DIAMOND REPORT



October 27, 2025

IGI Report Number **LG741556931**Description **LABORATORY GROWN DIAMOND**Shape and Cutting Style **ROUND BRILLIANT**

Measurements 8.76 - 8.79 X 5.32 MM

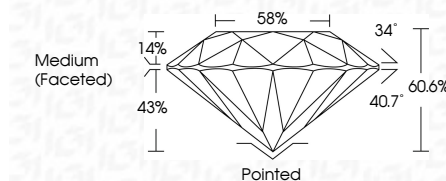
GRADING RESULTS

Carat Weight **2.51 CARATS**

Color Grade

Clarity Grade VS 1

Cut Grade **IDEAL**



ADDITIONAL GRADING INFORMATION

Polish **EXCELLENT**Symmetry **EXCELLENT**Fluorescence **NONE**Inscription(s)  LG741556931

Comments: This Laboratory Grown Diamond was created by Chemical Vapor Deposition (CVD) growth process.
Type IIa



October 27, 2025	Color Weight	2.51 CARATS
Report No. LG74156981	Color Grade	F
ROUND BRILLIANT	Clarity Grade	VS 1
6.74 - 6.79 X 5.32 MM	Clarity Grade	IDEAL
	Depth	60.6%
	Table	59%
	Grade	Medium (Faced)
	Culet	Pointed
	Polish	EXCELLENT
	Symmetry	EXCELLENT
	Fluorescence	NONE
	Inscription(s)	g91 LG74156981
	Comments:	
		This Laboratory Grown Diamond was created by Chemical Vapor Deposition (CVD) growth process.
		Type IIA



THIS DOCUMENT WAS PRODUCED WITH THE FOLLOWING SECURITY MEASURES: SPECIAL DOCUMENT PAPER, INK SCREENS, WATERMARK, BACKGROUND DESIGNS, HOLOGRAM AND OTHER SECURITY FEATURES NOT LISTED AND DO EXCEED DOCUMENT SECURITY INDUSTRY GUIDELINE