



**INTERNATIONAL  
GEMOLOGICAL  
INSTITUTE**

**ELECTRONIC COPY**

LG741554103  
Report verification at [igi.org](https://igi.org)

LABORATORY GROWN DIAMOND REPORT



October 9, 2025

IGI Report Number **LG741554103**

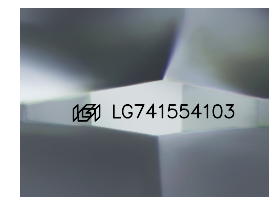
Description	LABORATORY GROWN DIAMOND
-------------	--------------------------

Shape and Cutting Style **SQUARE CUSHION MODIFIED  
BRILLIANT**

Measurements 8.11 X 8.02 X 5.48 MM

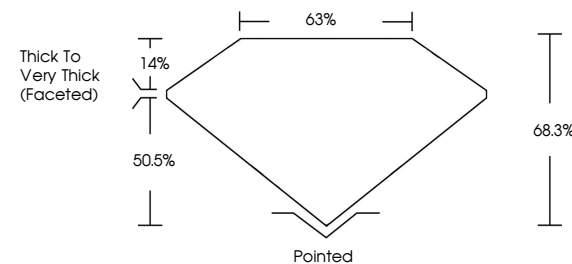
## GRADING RESULTS

Carat Weight **3.05 CARATS**

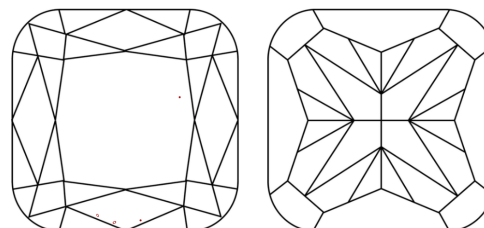
Color Grade **E**Clarity Grade WS 2

Sample Image Used

## PROPORTIONS



## CLARITY CHARACTERISTICS



## KEY TO SYMBOLS

Red symbols indicate internal characteristics.  
Green symbols indicate external characteristics.

## COLOR

D E F G H I J Faint Very Light Light

## CLARITY

FL IF WS<sup>1-2</sup> VS<sup>1-2</sup> SI<sup>1-2</sup> |<sup>1-3</sup>

Flawless	Internally Flawless	Very Very Slightly Included	Very Slightly Included	Slightly Included	Included
----------	---------------------	-----------------------------	------------------------	-------------------	----------

### ADDITIONAL GRADING INFORMATION

Polish **EXCELLENCE**Symmetry **EXCELLENCE**

Fluorescence NON

Inscription(s)  LG74155410

Comments: This Laboratory Grown Diamond was created by Chemical Vapor Deposition (CVD) growth process.  
Type IIa



© IGI 2020, International Gemological Institute

FD - 10 20

**www.igi.org**

THIS DOCUMENT WAS PRODUCED WITH THE FOLLOWING SECURITY MEASURES: SPECIAL DOCUMENT PAPER, INK SCREENS, WATERMARK, BACKGROUND DESIGNS, HOLOGRAM AND OTHER SECURITY FEATURES NOT LISTED AND DO EXCEED DOCUMENT SECURITY INDUSTRY GUIDELINES

October 9, 2025	
GI Report No. LG741554103	
SQUARE CUSHION MODIFIED BRILLIANT	
3.05 CARATS	
Color Weight	VVS 2
Color Grade	68.3%
Clarity Grade	65%
Depth	Thick to Very Thick (Faceted)
Table	Pointed
Girdle	EXCELLENT
	EXCELLENT
	Fluorescence
	None
	1691 LG741554103

Comments:

The Laboratory Grown Diamond was  
 produced by Chemical Vapor Deposition  
 (CVD) growth process.  
 type IIG