



ELECTRONIC COPY

LG741554029 Report verification at igi.org



October 9, 2025 IGI Report Number LG741554029 Description LABORATORY GROWN DIAMOND Shape and Cutting Style SQUARE CUSHION MODIFIED BRILLIANT Measurements 8.43 X 8.32 X 5.34 MM GRADING RESULTS Carat Weight 3.19 CARATS Color Grade D Clarity Grade VS 1

LABORATORY GROWN DIAMOND REPORT

October 9, 2025 IGI Report Number LG741554029 Description LABORATORY GROWN DIAMOND Shape and Cutting Style SQUARE CUSHION MODIFIED BRILLIANT Measurements 8.43 X 8.32 X 5.34 MM

GRADING RESULTS

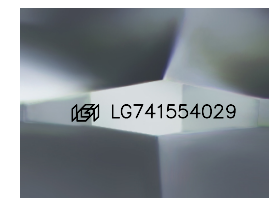
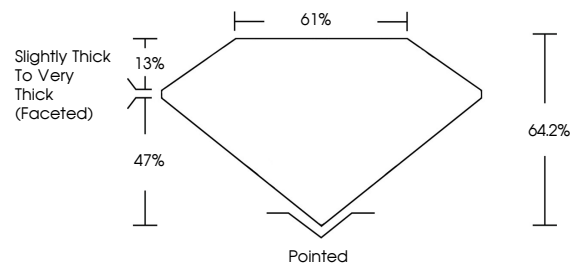
Carat Weight 3.19 CARATS Color Grade D Clarity Grade VS 1

ADDITIONAL GRADING INFORMATION

Polish EXCELLENT Symmetry EXCELLENT Fluorescence NONE Inscription(s) LG741554029

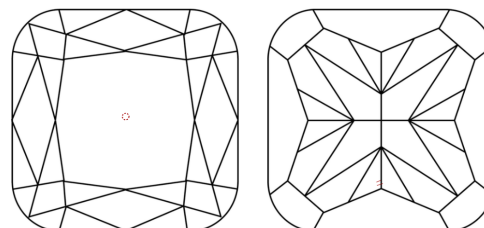
Comments: As Grown - No indication of post-growth treatment. This Laboratory Grown Diamond was created by High Pressure High Temperature (HPHT) growth process. Type II

PROPORTIONS



Sample Image Used

CLARITY CHARACTERISTICS



KEY TO SYMBOLS

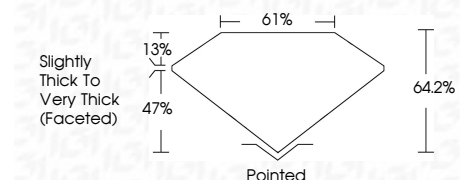
Red symbols indicate internal characteristics. Green symbols indicate external characteristics.

COLOR

D E F G H I J Faint Very Light Light

CLARITY

Table with columns: FL, IF, VS 1-2, VS 1-2, SI 1-2, I 1-3. Row: Flawless, Internally Flawless, Very Very Slightly Included, Very Slightly Included, Slightly Included, Included



ADDITIONAL GRADING INFORMATION

Polish EXCELLENT Symmetry EXCELLENT Fluorescence NONE Inscription(s) LG741554029 Comments: As Grown - No indication of post-growth treatment. This Laboratory Grown Diamond was created by High Pressure High Temperature (HPHT) growth process. Type II



October 9, 2025 IGI Report No LG741554029 SQUARE CUSHION MODIFIED BRILLIANT 8.43 X 8.32 X 5.34 MM 3.19 CARATS D VS 1 64.2% 61% Slightly Thick To Very Thick (Faceted) Pointed EXCELLENT EXCELLENT NONE LG741554029

Comments: As Grown - No indication of post-growth treatment. This Laboratory Grown Diamond was created by High Pressure High Temperature (HPHT) growth process. Type II