



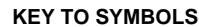
LABORATORY GROWN DIAMOND REPORT


GRADING RESULTS

ADDITIONAL GRADING INFORMATION

Comments: HEARTS & ARROWS
As Grown - No indication of post-growth treatment.
This Laboratory Grown Diamond was created by High
Pressure High Temperature (HPHT) growth process.
Type II

PROPORTIONS



 LG741553075

Sample Image Used

COLOR

D E F G H I J Faint Very Light Light

CLARITY

FL	IF	VVS ¹⁻²	VS ¹⁻²	SI ¹⁻²	I ¹⁻³
Flawless	Internally Flawless	Very Very Slightly Included	Very Slightly Included	Slightly Included	Included

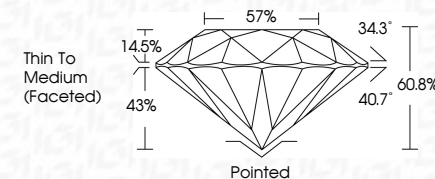
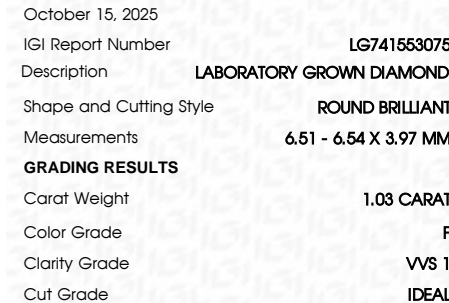


© IGI 2020, International Gemological Institute

FD - 10 20

THIS DOCUMENT WAS PRODUCED WITH THE FOLLOWING SECURITY MEASURES: SPECIAL DOCUMENT PAPER, INK SCREENS, WATERMARK, BACKGROUND DESIGNS, HOLOGRAM AND OTHER SECURITY FEATURES NOT LISTED AND DO EXCEED DOCUMENT SECURITY INDUSTRY GUIDELINES

LABORATORY GROWN DIAMOND REPORT



ADDITIONAL GRADING INFORMATION

Polish	EXCELLENT
Symmetry	EXCELLENT
Fluorescence	NONE
Inscription(s)	(G) LG741553075
Comments: HEARTS & ARROWS	
As Grown - No indication of post-growth treatment.	
This Laboratory Grown Diamond was created by High Pressure High Temperature (HPHT) growth process.	
Type II	



October 15, 2025	GI Report No LG711553075	1.03 CARAT	F
ROUND BRILLIANT			VVS 1
4.51 - 4.54 X 3.97 MM			IDEAL
Color Weight			60.1%
Color Grade			57%
Clarity Grade			Thin To Medium (Faceted)
Cut Grade			Polished
Depth			EXCELLENT
Table			EXCELLENT
Girdle			NONE
			#69 LG711553075
Culet			
Polish			
Symmetry			
Fluorescence			
Inscriptions			
Comments:			
-HEART & ARROWS			
-None - No indication of post-growth treatment			
This Laboratory Grown Diamond was created by High Pressure High Temperature (HPHT) growth process.			