



LABORATORY GROWN DIAMOND REPORT

October 14, 2025
 IGI Report Number **LG741547736**
 Description **LABORATORY GROWN DIAMOND**
 Shape and Cutting Style **TRIANGULAR BRILLIANT**
 Measurements **6.70 X 7.66 X 3.23 MM**

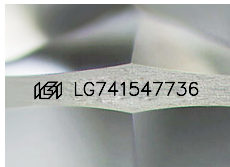
GRADING RESULTS

Carat Weight **0.68 CARAT**
 Color Grade **E**
 Clarity Grade **VVS 2**

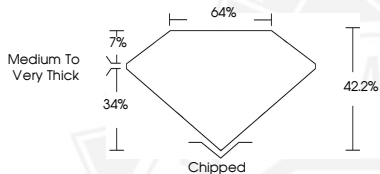
ADDITIONAL GRADING INFORMATION

Polish **GOOD**
 Symmetry **VERY GOOD**
 Fluorescence **NONE**
 Inscription(s) **IGI LG741547736**

Comments: This Laboratory Grown Diamond was created by Chemical Vapor Deposition (CVD) growth process. Type IIa



Sample Image Used



October 14, 2025
 IGI Report Number **LG741547736**
 TRIANGULAR BRILLIANT
 LABORATORY GROWN DIAMOND
6.70 X 7.66 X 3.23 MM
 Carat Weight **0.68 CARAT**
 Color Grade **E**
 Clarity Grade **VVS 2**
 Polish **GOOD**
 Symmetry **VERY GOOD**
 Fluorescence **NONE**
 Inscription(s) **IGI LG741547736**

Comments: This Laboratory Grown Diamond was created by Chemical Vapor Deposition (CVD) growth process. Type IIa



October 14, 2025
 IGI Report Number **LG741547736**
 TRIANGULAR BRILLIANT
 LABORATORY GROWN DIAMOND
6.70 X 7.66 X 3.23 MM
 Carat Weight **0.68 CARAT**
 Color Grade **E**
 Clarity Grade **VVS 2**
 Polish **GOOD**
 Symmetry **VERY GOOD**
 Fluorescence **NONE**
 Inscription(s) **IGI LG741547736**

Comments: This Laboratory Grown Diamond was created by Chemical Vapor Deposition (CVD) growth process. Type IIa



THIS DOCUMENT WAS PRODUCED WITH THE FOLLOWING SECURITY MEASURES: SPECIAL DOCUMENT PAPER, INK SCREENS, WATERMARK, BACKGROUND DESIGNS, HOLOGRAM AND OTHER SECURITY FEATURES NOT LISTED AND DO EXCEED DOCUMENT SECURITY INDUSTRY GUIDELINES.