



**ELECTRONIC COPY**

LG741543910  
Report verification at [igi.org](http://igi.org)



October 15, 2025

IGI Report Number **LG741543910**

Description **LABORATORY GROWN DIAMOND**

Shape and Cutting Style **ROUND BRILLIANT**

Measurements **8.80 - 8.85 X 5.45 MM**

**GRADING RESULTS**

Carat Weight **2.63 CARATS**

Color Grade **F**

Clarity Grade **VS 1**

Cut Grade **IDEAL**

October 15, 2025

IGI Report Number **LG741543910**

Description **LABORATORY GROWN DIAMOND**

Shape and Cutting Style **ROUND BRILLIANT**

Measurements **8.80 - 8.85 X 5.45 MM**

**GRADING RESULTS**

Carat Weight **2.63 CARATS**

Color Grade **F**

Clarity Grade **VS 1**

Cut Grade **IDEAL**

**ADDITIONAL GRADING INFORMATION**

Polish **EXCELLENT**

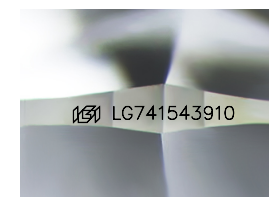
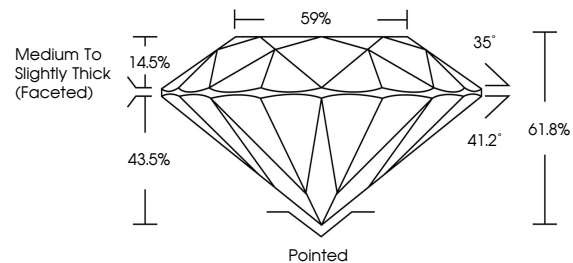
Symmetry **EXCELLENT**

Fluorescence **NONE**

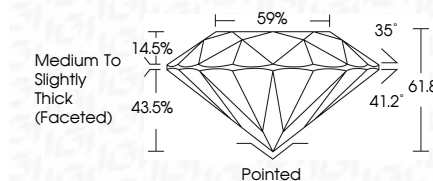
Inscription(s) **LG741543910**

Comments: This Laboratory Grown Diamond was created by Chemical Vapor Deposition (CVD) growth process. Type IIa

**PROPORTIONS**



Sample Image Used



**COLOR**

D E F G H I J Faint Very Light Light

**CLARITY**

FL	IF	VS <sup>1-2</sup>	VS <sup>1-2</sup>	SI <sup>1-2</sup>	I <sup>1-3</sup>
Flawless	Internally Flawless	Very Very Slightly Included	Very Slightly Included	Slightly Included	Included

**ADDITIONAL GRADING INFORMATION**

Polish **EXCELLENT**

Symmetry **EXCELLENT**

Fluorescence **NONE**

Inscription(s) **LG741543910**

Comments: This Laboratory Grown Diamond was created by Chemical Vapor Deposition (CVD) growth process. Type IIa



**IGI**



October 15, 2025  
IGI Report No LG741543910  
**ROUND BRILLIANT**

**8.80 - 8.85 X 5.45 MM**

Carat Weight **2.63 CARATS**

Color Grade **F**

Clarity Grade **VS 1**

Cut Grade **IDEAL**

Depth **61.8%**

Table **59%**

Girdle **Medium To Slightly Thick (Faceted)**

Culet **Pointed**

Polish **EXCELLENT**

Symmetry **EXCELLENT**

Fluorescence **NONE**

Inscription(s) **LG741543910**

Comments: This Laboratory Grown Diamond was created by Chemical Vapor Deposition (CVD) growth process. Type IIa