



ELECTRONIC COPY

LG741543702
Report verification at igi.org



October 15, 2025

IGI Report Number **LG741543702**

Description **LABORATORY GROWN DIAMOND**

Shape and Cutting Style **ROUND BRILLIANT**

Measurements **8.47 - 8.49 X 5.07 MM**

GRADING RESULTS

Carat Weight **2.23 CARATS**

Color Grade **G**

Clarity Grade **VS 1**

Cut Grade **IDEAL**

October 15, 2025

IGI Report Number **LG741543702**

Description **LABORATORY GROWN DIAMOND**

Shape and Cutting Style **ROUND BRILLIANT**

Measurements **8.47 - 8.49 X 5.07 MM**

GRADING RESULTS

Carat Weight **2.23 CARATS**

Color Grade **G**

Clarity Grade **VS 1**

Cut Grade **IDEAL**

ADDITIONAL GRADING INFORMATION

Polish **EXCELLENT**

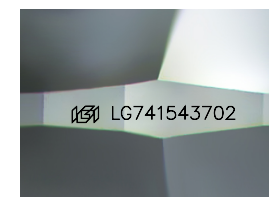
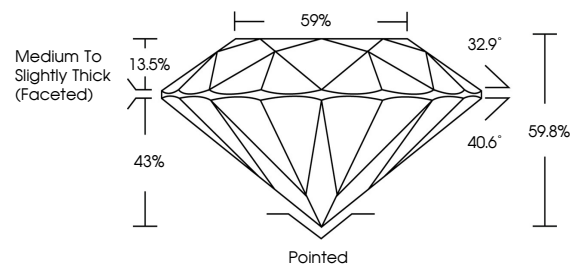
Symmetry **EXCELLENT**

Fluorescence **NONE**

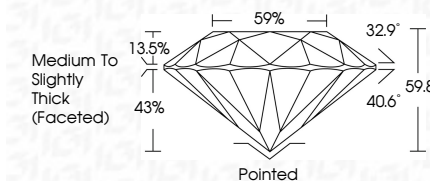
Inscription(s) **LG741543702**

Comments: This Laboratory Grown Diamond was created by Chemical Vapor Deposition (CVD) growth process. Type IIa

PROPORTIONS



Sample Image Used



COLOR

D E F G H I J Faint Very Light Light

CLARITY

FL	IF	VS ¹⁻²	VS ¹⁻²	SI ¹⁻²	I ¹⁻³
Flawless	Internally Flawless	Very Very Slightly Included	Very Slightly Included	Slightly Included	Included

ADDITIONAL GRADING INFORMATION

Polish **EXCELLENT**

Symmetry **EXCELLENT**

Fluorescence **NONE**

Inscription(s) **LG741543702**

Comments: This Laboratory Grown Diamond was created by Chemical Vapor Deposition (CVD) growth process. Type IIa



IGI



October 15, 2025
IGI Report No LG741543702
ROUND BRILLIANT
8.47 - 8.49 X 5.07 MM
2.23 CARATS
Color Grade G
Clarity Grade VS 1
Cut Grade IDEAL
Depth 59.8%
Table 13.5%
Girdle 59%
Medium To Slightly Thick (Faceted)
Culet Pointed
Polish EXCELLENT
Symmetry EXCELLENT
Fluorescence NONE
Inscriptions(s) LG741543702
Comments: This Laboratory Grown Diamond was created by Chemical Vapor Deposition (CVD) growth process. Type IIa