



ELECTRONIC COPY

LG741539452
Report verification at igi.org



October 12, 2025

IGI Report Number **LG741539452**

Description **LABORATORY GROWN DIAMOND**

Shape and Cutting Style **EMERALD CUT**

Measurements **7.29 X 4.93 X 3.05 MM**

GRADING RESULTS

Carat Weight **1.09 CARAT**

Color Grade **FANCY INTENSE PINK**

Clarity Grade **VS 2**

LABORATORY GROWN DIAMOND REPORT

October 12, 2025

IGI Report Number **LG741539452**

Description **LABORATORY GROWN DIAMOND**

Shape and Cutting Style **EMERALD CUT**

Measurements **7.29 X 4.93 X 3.05 MM**

GRADING RESULTS

Carat Weight **1.09 CARAT**

Color Grade **FANCY INTENSE PINK**

Clarity Grade **VS 2**

ADDITIONAL GRADING INFORMATION

Polish **VERY GOOD**

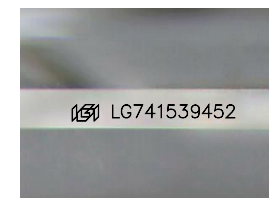
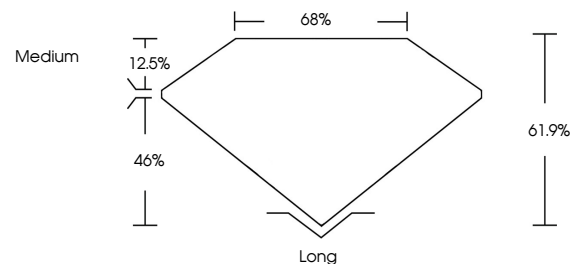
Symmetry **VERY GOOD**

Fluorescence **STRONG**

Inscription(s) **LG741539452**

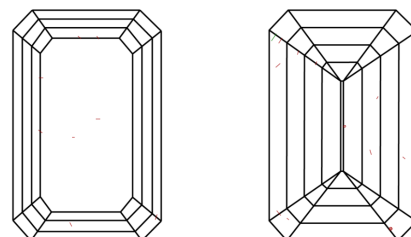
Comments: This Laboratory Grown Diamond was created by Chemical Vapor Deposition (CVD) growth process. Indications of post-growth treatment.

PROPORTIONS



Sample Image Used

CLARITY CHARACTERISTICS



KEY TO SYMBOLS

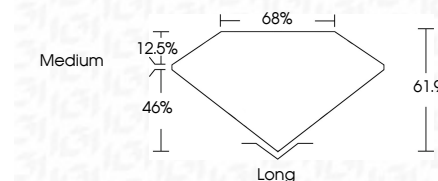
Red symbols indicate internal characteristics.
Green symbols indicate external characteristics.

COLOR

D E F G H I J Faint Very Light Light

CLARITY

FL	IF	VS ¹⁻²	VS ¹⁻²	SI ¹⁻²	I ¹⁻³
Flawless	Internally Flawless	Very Very Slightly Included	Very Slightly Included	Slightly Included	Included



ADDITIONAL GRADING INFORMATION

Polish **VERY GOOD**

Symmetry **VERY GOOD**

Fluorescence **STRONG**

Inscription(s) **LG741539452**

Comments: This Laboratory Grown Diamond was created by Chemical Vapor Deposition (CVD) growth process. Indications of post-growth treatment.



October 12, 2025
IGI Report No LG741539452
EMERALD CUT

1.09 CARAT
Carat Weight
FANCY INTENSE PINK
Color Grade
VS 2
Clarity Grade
61.9%
Depth
68%
Table
Medium
Girdle
Long
Culet
VERY GOOD
Polish
VERY GOOD
Symmetry
STRONG
Fluorescence
STRONG
Inscription(s)
 LG741539452

Comments: This Laboratory Grown Diamond was created by Chemical Vapor Deposition (CVD) growth process. Indications of post-growth treatment.