



ELECTRONIC COPY

LG741539432
Report verification at igi.org



October 15, 2025
IGI Report Number LG741539432
Description LABORATORY GROWN DIAMOND
Shape and Cutting Style PRINCESS CUT
Measurements 7.65 X 7.65 X 5.84 MM
GRADING RESULTS
Carat Weight 3.00 CARATS
Color Grade FANCY INTENSE PINK
Clarity Grade VVS 2

LABORATORY GROWN DIAMOND REPORT

October 15, 2025
IGI Report Number LG741539432
Description LABORATORY GROWN DIAMOND
Shape and Cutting Style PRINCESS CUT
Measurements 7.65 X 7.65 X 5.84 MM

GRADING RESULTS

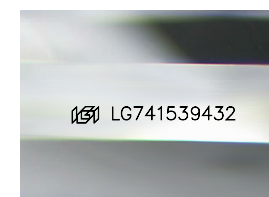
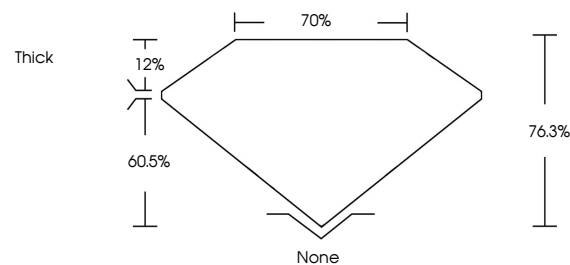
Carat Weight 3.00 CARATS
Color Grade FANCY INTENSE PINK
Clarity Grade VVS 2

ADDITIONAL GRADING INFORMATION

Polish VERY GOOD
Symmetry EXCELLENT
Fluorescence STRONG
Inscription(s) LG741539432

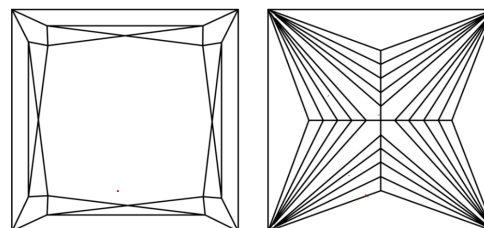
Comments: This Laboratory Grown Diamond was created by Chemical Vapor Deposition (CVD) growth process. Indications of post-growth treatment.

PROPORTIONS



Sample Image Used

CLARITY CHARACTERISTICS



KEY TO SYMBOLS

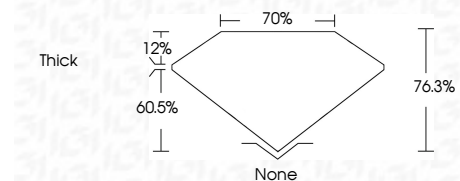
Red symbols indicate internal characteristics.
Green symbols indicate external characteristics.

COLOR

D E F G H I J Faint Very Light Light

CLARITY

FL IF VVS 1-2 VS 1-2 SI 1-2 I 1-3
Flawless Internally Flawless Very Very Slightly Included Very Slightly Included Slightly Included Included



ADDITIONAL GRADING INFORMATION

Polish VERY GOOD
Symmetry EXCELLENT
Fluorescence STRONG
Inscription(s) LG741539432
Comments: This Laboratory Grown Diamond was created by Chemical Vapor Deposition (CVD) growth process. Indications of post-growth treatment.



October 15, 2025
IGI Report No LG741539432
PRINCESS CUT
3.00 CARATS
FANCY INTENSE PINK
VVS 2
7.65 X 7.65 X 5.84 MM
76.3%
70%
Thick
None
VERY GOOD
EXCELLENT
STRONG
IGI LG741539432
Comments: This Laboratory Grown Diamond was created by Chemical Vapor Deposition (CVD) growth process. Indications of post-growth treatment.