



ELECTRONIC COPY

LG741539397
Report verification at igi.org



October 12, 2025

IGI Report Number **LG741539397**

Description **LABORATORY GROWN DIAMOND**

Shape and Cutting Style **EMERALD CUT**

Measurements **7.99 X 5.74 X 3.97 MM**

GRADING RESULTS

Carat Weight **1.82 CARAT**

Color Grade **FANCY INTENSE PINK**

Clarity Grade **VS 1**

LABORATORY GROWN DIAMOND REPORT

October 12, 2025

IGI Report Number **LG741539397**

Description **LABORATORY GROWN DIAMOND**

Shape and Cutting Style **EMERALD CUT**

Measurements **7.99 X 5.74 X 3.97 MM**

GRADING RESULTS

Carat Weight **1.82 CARAT**

Color Grade **FANCY INTENSE PINK**

Clarity Grade **VS 1**

ADDITIONAL GRADING INFORMATION

Polish **EXCELLENT**

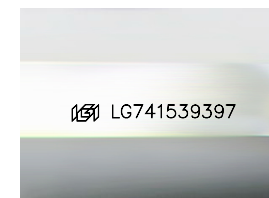
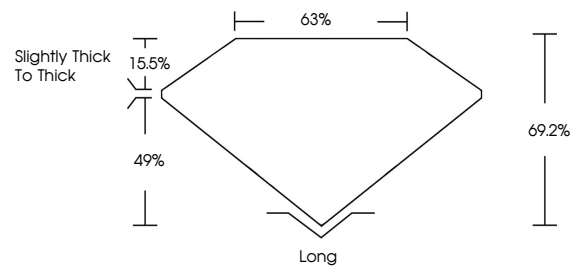
Symmetry **EXCELLENT**

Fluorescence **STRONG**

Inscription(s) **LG741539397**

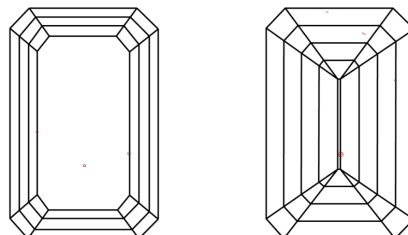
Comments: This Laboratory Grown Diamond was created by Chemical Vapor Deposition (CVD) growth process. Indications of post-growth treatment.

PROPORTIONS



Sample Image Used

CLARITY CHARACTERISTICS



KEY TO SYMBOLS

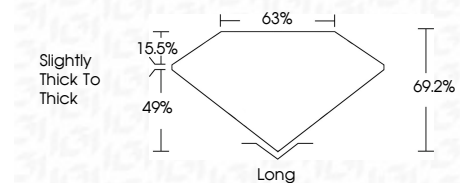
Red symbols indicate internal characteristics.
Green symbols indicate external characteristics.

COLOR

D E F G H I J Faint Very Light Light

CLARITY

FL	IF	VS ¹⁻²	VS ¹⁻²	SI ¹⁻²	I ¹⁻³
Flawless	Internally Flawless	Very Very Slightly Included	Very Slightly Included	Slightly Included	Included



ADDITIONAL GRADING INFORMATION

Polish **EXCELLENT**

Symmetry **EXCELLENT**

Fluorescence **STRONG**

Inscription(s) **LG741539397**

Comments: This Laboratory Grown Diamond was created by Chemical Vapor Deposition (CVD) growth process. Indications of post-growth treatment.



IGI



October 12, 2025
IGI Report No **LG741539397**
EMERALD CUT
1.82 CARAT
FANCY INTENSE PINK
Carat Weight
Color Grade
Clarity Grade
Depth
Table
Girdle
VS 1
69.2%
63%
Slightly thick to thick
Long
Cutlet
Polish
Symmetry
Fluorescence
Inscription(s)
EXCELLENT
EXCELLENT
STRONG
 LG741539397

Comments: This Laboratory Grown Diamond was created by Chemical Vapor Deposition (CVD) growth process. Indications of post-growth treatment.