

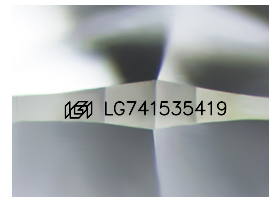
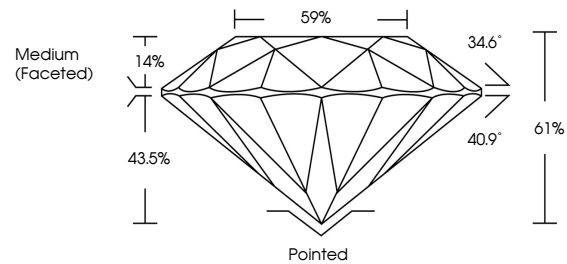


**INTERNATIONAL  
GEMOLOGICAL  
INSTITUTE**

**ELECTRONIC COPY**

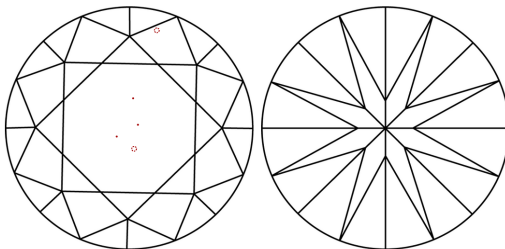
LG741535419  
Report verification at [igi.org](https://igi.org)

## PROPORTIONS



Sample Image Used

## CLARITY CHARACTERISTICS



## KEY TO SYMBOLS

Red symbols indicate internal characteristics.  
Green symbols indicate external characteristics.

**COLOR**

D E F G H I J Faint Very Light Light

## CLARITY

FL IF WS<sup>1-2</sup> VS<sup>1-2</sup> SI<sup>1-2</sup> I<sup>1-3</sup>

|          |                     |                             |                        |                   |          |
|----------|---------------------|-----------------------------|------------------------|-------------------|----------|
| Flawless | Internally Flawless | Very Very Slightly Included | Very Slightly Included | Slightly Included | Included |
|----------|---------------------|-----------------------------|------------------------|-------------------|----------|



October 8, 2025

IGI Report Number **LG741535419**

|             |                          |
|-------------|--------------------------|
| Description | LABORATORY GROWN DIAMOND |
|-------------|--------------------------|

Shape and Cutting Style **ROUND BRILLIANT**

|              |                       |
|--------------|-----------------------|
| Measurements | 8.77 - 8.82 X 5.36 MM |
|--------------|-----------------------|

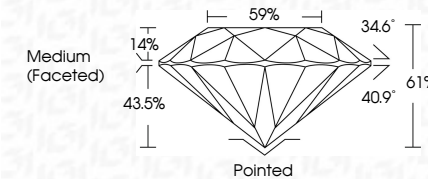
## GRADING RESULTS

Carat Weight **2.55 CARATS**

Color Grade **D**

Clarity Grade VS 1

Cut Grade **IDEAL**



### ADDITIONAL GRADING INFORMATION

Polish **EXCELLENT**Symmetry **EXCELLENT**Fluorescence **NONE**Inscription(s)  LG74153541

Comments: This Laboratory Grown Diamond was created by Chemical Vapor Deposition (CVD) growth process.  
Type IIa



IG



© IGI 2020, International Gemological Institute

FD - 10 20

**www.igi.org**

THIS DOCUMENT WAS PRODUCED WITH THE FOLLOWING SECURITY MEASURES: SPECIAL DOCUMENT PAPER, INK SCREENS, WATERMARK, BACKGROUND DESIGNS, HOLOGRAM AND OTHER SECURITY FEATURES NOT LISTED AND DO EXCEED DOCUMENT SECURITY INDUSTRY GUIDELINES

|                 |                           |             |               |           |       |       |        |                  |         |           |           |              |                 |   |
|-----------------|---------------------------|-------------|---------------|-----------|-------|-------|--------|------------------|---------|-----------|-----------|--------------|-----------------|---|
| October 8, 2025 | GI Report No. LG741386419 | 2.65 CARATS | D             | Vs 1      | IDEAL | 61%   | 59%    | Medium (Faceted) | Pointed | EXCELLENT | EXCELLENT | NONE         | gsm LG741386419 | <b>Comments:</b><br>The Laboratory Grown Diamond was created by Chemical Vapor Deposition (CVD) growth process.<br>Type IIa |
| ROUND BRILLIANT | 7.77 - 6.82 X 5.36 MM     |             |               |           |       |       |        |                  |         |           |           |              |                 |   |
|                 | Carat Weight              | Color Grade | Clarity Grade | Cut Grade | Depth | Table | Girdle |                  | Culet   | Pavil     | Symmetry  | Fluorescence | Inscriptions(s) |   |