



**ELECTRONIC COPY**

## LABORATORY GROWN DIAMOND REPORT

October 28, 2025	
IGI Report Number	LG741532755
Description	LABORATORY GROWN DIAMOND
Shape and Cutting Style	ROUND BRILLIANT
Measurements	8.70 - 8.75 X 5.39 MM

## GRADING RESULTS

Carat Weight	2.54 CARATS
Color Grade	FANCY VIVID BLUE
Clarity Grade	VS 1
Cut Grade	IDEAL

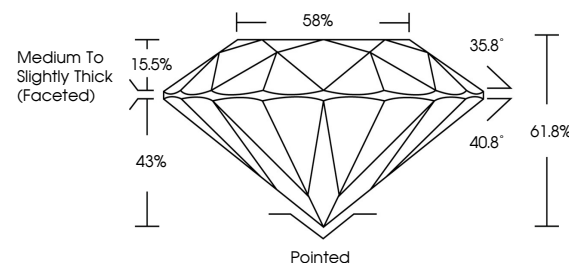
### ADDITIONAL GRADING INFORMATION

Polish	EXCELLENT
Symmetry	EXCELLENT
Fluorescence	NONE
Inscription(s)	151 LG741532755

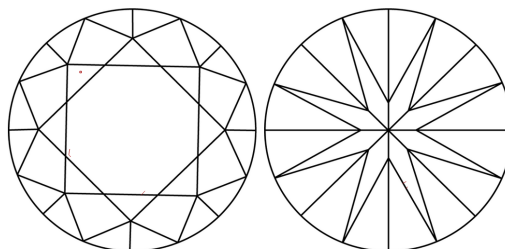
Comments: This Laboratory Grown Diamond was created by High Pressure High Temperature (HPHT) growth process.  
Indications of post-growth treatment.

LG741532755  
Report verification at [igi.org](https://igi.org)

## PROPORTIONS

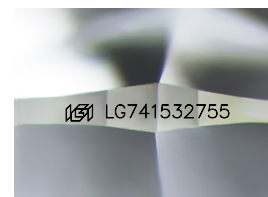


## CLARITY CHARACTERISTICS



## KEY TO SYMBOLS

Red symbols indicate internal characteristics.  
Green symbols indicate external characteristics.



Sample Image Used

## COLOR

D E F G H I J Faint Very Light Light

## CLARITY

FL	IF	VVS <sup>1-2</sup>	VS <sup>1-2</sup>	SI <sup>1-2</sup>	I <sup>1-3</sup>
Flawless	Internally Flawless	Very Very Slightly Included	Very Slightly Included	Slightly Included	Included

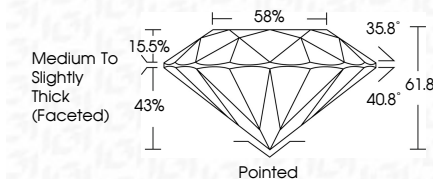
## LABORATORY GROWN DIAMOND REPORT



October 28, 2025	
IGI Report Number	LG741532755
Description	LABORATORY GROWN DIAMOND
Shape and Cutting Style	ROUND BRILLIANT
Measurements	8.70 - 8.75 X 5.39 MM

## GRADING RESULTS

Carat Weight	2.54 CARATS
Color Grade	FANCY VIVID BLUE
Clarity Grade	VS 1
Cut Grade	IDEAL



### ADDITIONAL GRADING INFORMATION

Polish	EXCELLENT
Symmetry	EXCELLENT
Fluorescence	NONE
Inscription(s)	(16) LG741532755

Comments: This Laboratory Grown Diamond was created by High Pressure High Temperature (HPHT) growth process.  
Indications of post-growth treatment.



© IGI 2020, International Gemological Institute

FD - 10 20



THIS DOCUMENT WAS PRODUCED WITH THE FOLLOWING SECURITY MEASURES: SPECIAL DOCUMENT PAPER, INK SCREENS, WATERMARK, BACKGROUND DESIGNS, HOLOGRAM AND OTHER SECURITY FEATURES NOT LISTED AND DO EXCEED DOCUMENT SECURITY INDUSTRY GUIDELINE

**www.igi.org**

