



ELECTRONIC COPY

LG741532704
Report verification at igi.org



October 29, 2025
IGI Report Number **LG741532704**
Description **LABORATORY GROWN DIAMOND**
Shape and Cutting Style **CUSHION MODIFIED BRILLIANT**
Measurements **8.35 X 5.83 X 3.89 MM**
GRADING RESULTS
Carat Weight **1.67 CARAT**
Color Grade **FANCY YELLOWISH GRAY**
Clarity Grade **VVS 2**

LABORATORY GROWN DIAMOND REPORT

October 29, 2025
IGI Report Number **LG741532704**
Description **LABORATORY GROWN DIAMOND**
Shape and Cutting Style **CUSHION MODIFIED BRILLIANT**
Measurements **8.35 X 5.83 X 3.89 MM**

GRADING RESULTS

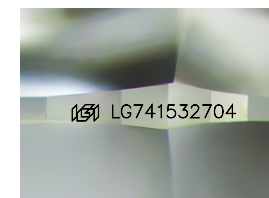
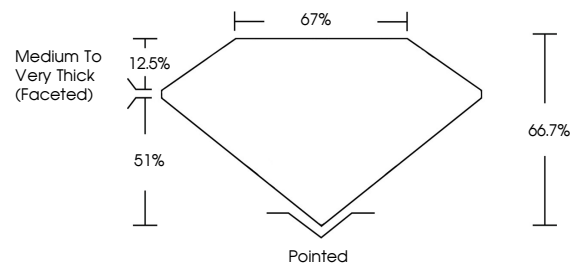
Carat Weight **1.67 CARAT**
Color Grade **FANCY YELLOWISH GRAY**
Clarity Grade **VVS 2**

ADDITIONAL GRADING INFORMATION

Polish **EXCELLENT**
Symmetry **EXCELLENT**
Fluorescence **NONE**
Inscription(s) **IGI LG741532704**

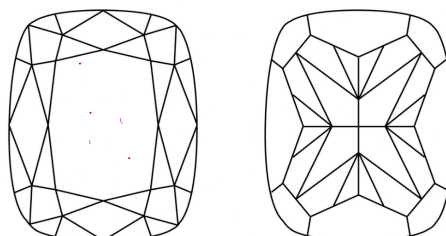
Comments: This Laboratory Grown Diamond was created by Chemical Vapor Deposition (CVD) growth process.
Indications of post-growth treatment.

PROPORTIONS



Sample Image Used

CLARITY CHARACTERISTICS



KEY TO SYMBOLS

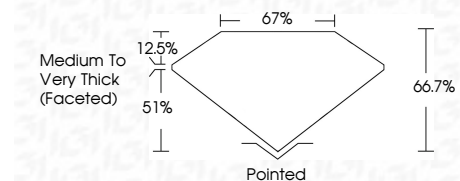
Red symbols indicate internal characteristics.
Green symbols indicate external characteristics.

COLOR

D E F G H I J Faint Very Light Light

CLARITY

FL	IF	VVS ¹⁻²	VS ¹⁻²	SI ¹⁻²	I ¹⁻³
Flawless	Internally Flawless	Very Very Slightly Included	Very Slightly Included	Slightly Included	Included



ADDITIONAL GRADING INFORMATION

Polish **EXCELLENT**
Symmetry **EXCELLENT**
Fluorescence **NONE**
Inscription(s) **IGI LG741532704**
Comments: This Laboratory Grown Diamond was created by Chemical Vapor Deposition (CVD) growth process.
Indications of post-growth treatment.



October 29, 2025
IGI Report No **LG741532704**
CUSHION MODIFIED BRILLIANT
8.35 X 5.83 X 3.89 MM
1.67 CARAT
Carat Weight
Color Grade **FANCY YELLOWISH GRAY**
Clarity Grade **VVS 2**
Depth **66.7%**
Table **67%**
Girdle **Medium to Very Thick (Faceted)**
Culet **Pointed**
Polish **EXCELLENT**
Symmetry **EXCELLENT**
Fluorescence **NONE**
Inscription(s) **IGI LG741532704**

Comments: This Laboratory Grown Diamond was created by Chemical Vapor Deposition (CVD) growth process.
Indications of post-growth treatment.