



ELECTRONIC COPY

LABORATORY GROWN DIAMOND REPORT

October 30, 2025	
IGI Report Number	LG741530537
Description	LABORATORY GROWN DIAMOND
Shape and Cutting Style	PRINCESS CUT
Measurements	7.01 X 6.91 X 4.72 MM

GRADING RESULTS

Carat Weight	2.03 CARATS
Color Grade	D
Clarity Grade	VVS 2

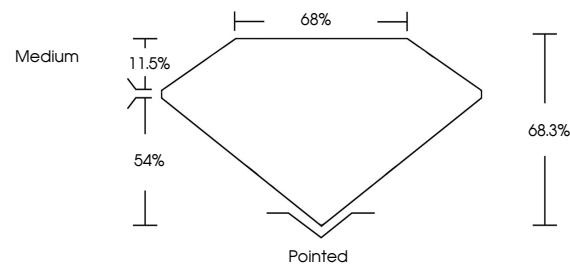
ADDITIONAL GRADING INFORMATION

Polish	EXCELLENT
Symmetry	EXCELLENT
Fluorescence	NONE
Inscription(s)	 LG741530537

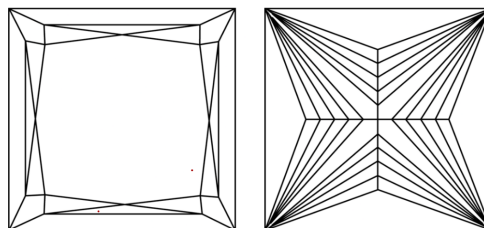
Comments: This Laboratory Grown Diamond was created by Chemical Vapor Deposition (CVD) growth process.
Type IIa

LG741530537
Report verification at igi.org

PROPORTIONS

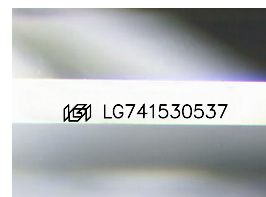


CLARITY CHARACTERISTICS



KEY TO SYMBOLS

Red symbols indicate internal characteristics.
Green symbols indicate external characteristics.



Sample Image Used

COLOR

D E F G H I J Faint Very Light Light

CLARITY

FL	IF	VVS ¹⁻²	VS ¹⁻²	SI ¹⁻²	I ¹⁻³
Flawless	Internally Flawless	Very Very Slightly Included	Very Slightly Included	Slightly Included	Included

LABORATORY GROWN DIAMOND REPORT



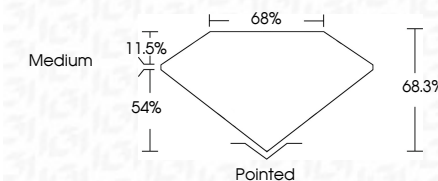
October 30, 2025	
IGI Report Number	LG741530537
Description	LABORATORY GROWN DIAMOND
Shape and Cutting Style	PRINCESS CUT
Measurements	7.01 X 6.91 X 4.72 MM

GRADING RESULTS

Carat Weight	2.03 CARATS
Color Grade	D
Clarity Grade	VVS 2

ADDITIONAL GRADING INFORMATION

Polish	EXCELLENT
Symmetry	EXCELLENT
Fluorescence	NONE
Inscription(s)	 LG741530537
<p>Comments: This Laboratory Grown Diamond was created by Chemical Vapor Deposition (CVD) growth process.</p> <p>Type IIa</p>	



© IGI 2020, International Gemological Institute

FD - 10 20



THIS DOCUMENT WAS PRODUCED WITH THE FOLLOWING SECURITY MEASURES: SPECIAL DOCUMENT PAPER, INK SCREENS, WATERMARK, BACKGROUND DESIGNS, HOLOGRAM AND OTHER SECURITY FEATURES NOT LISTED AND DO EXCEED DOCUMENT SECURITY INDUSTRY GUIDELINES

www.igi.org



October 30, 2025
IGI Report No LG741530537
PRINCESS CIT

2.03 CARATS	D	VVS 2	68.9%	68%	Medium	Pointed	EXCELLENT	EXCELLENT	NONE	4e11 (G21) 590637
Carat Weight	Color Grade	Clarity Grade	Depth	Table	Girdle	Polish	Symmetry	Fluorescence	Inclusions (s)	

Comments:
This Laboratory Grown Diamond was created by Chemical Vapor Deposition (CVD) growth process.