



**ELECTRONIC COPY**

LG741530228  
Report verification at igi.org



October 27, 2025  
IGI Report Number **LG741530228**  
Description **LABORATORY GROWN DIAMOND**  
Shape and Cutting Style **RECTANGULAR CUSHION MIXED CUT**  
Measurements **10.18 X 7.45 X 4.46 MM**  
**GRADING RESULTS**  
Carat Weight **3.02 CARATS**  
Color Grade **E**  
Clarity Grade **VVS 2**

October 27, 2025  
IGI Report Number **LG741530228**  
Description **LABORATORY GROWN DIAMOND**  
Shape and Cutting Style **RECTANGULAR CUSHION MIXED CUT**  
Measurements **10.18 X 7.45 X 4.46 MM**

**GRADING RESULTS**

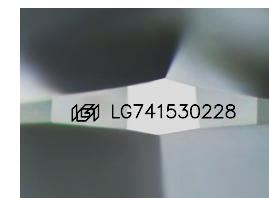
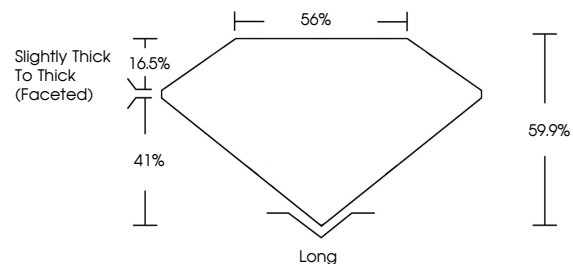
Carat Weight **3.02 CARATS**  
Color Grade **E**  
Clarity Grade **VVS 2**

**ADDITIONAL GRADING INFORMATION**

Polish **EXCELLENT**  
Symmetry **EXCELLENT**  
Fluorescence **NONE**  
Inscription(s) **IGI LG741530228**

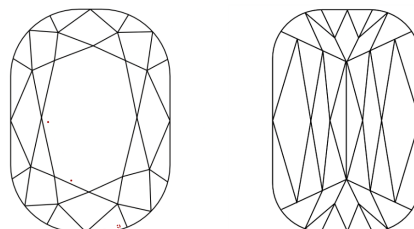
Comments: This Laboratory Grown Diamond was created by Chemical Vapor Deposition (CVD) growth process.  
Type IIa

**PROPORTIONS**



Sample Image Used

**CLARITY CHARACTERISTICS**



**KEY TO SYMBOLS**

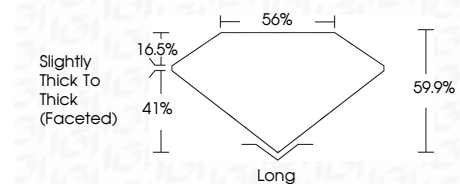
Red symbols indicate internal characteristics.  
Green symbols indicate external characteristics.

**COLOR**

D E F G H I J Faint Very Light Light

**CLARITY**

FL	IF	VVS <sup>1-2</sup>	VS <sup>1-2</sup>	SI <sup>1-2</sup>	I <sup>1-3</sup>
Flawless	Internally Flawless	Very Very Slightly Included	Very Slightly Included	Slightly Included	Included



**ADDITIONAL GRADING INFORMATION**

Polish **EXCELLENT**  
Symmetry **EXCELLENT**  
Fluorescence **NONE**  
Inscription(s) **IGI LG741530228**  
Comments: This Laboratory Grown Diamond was created by Chemical Vapor Deposition (CVD) growth process.  
Type IIa



October 27, 2025  
IGI Report No LG741530228  
RECTANGULAR CUSHION MIXED CUT  
10.18 X 7.45 X 4.46 MM  
3.02 CARATS  
E  
VVS 2  
59.9%  
41%  
Slightly Thick To Thick (Faceted)  
Long  
EXCELLENT  
EXCELLENT  
NONE  
IGI LG741530228

Comments: This Laboratory Grown Diamond was created by Chemical Vapor Deposition (CVD) growth process.  
Type IIa