



ELECTRONIC COPY

LG741525875
Report verification at igi.org



October 12, 2025
IGI Report Number LG741525875
Description LABORATORY GROWN DIAMOND
Shape and Cutting Style ROUND BRILLIANT
Measurements 6.42 - 6.48 X 3.98 MM
GRADING RESULTS
Carat Weight 1.02 CARAT
Color Grade FANCY INTENSE PINK
Clarity Grade VS 1
Cut Grade IDEAL

October 12, 2025
IGI Report Number LG741525875
Description LABORATORY GROWN DIAMOND
Shape and Cutting Style ROUND BRILLIANT
Measurements 6.42 - 6.48 X 3.98 MM

GRADING RESULTS

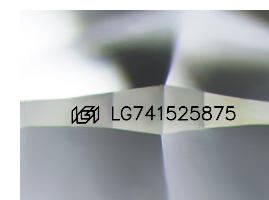
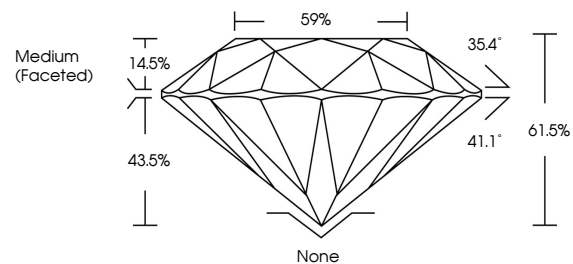
Carat Weight 1.02 CARAT
Color Grade FANCY INTENSE PINK
Clarity Grade VS 1
Cut Grade IDEAL

ADDITIONAL GRADING INFORMATION

Polish VERY GOOD
Symmetry EXCELLENT
Fluorescence STRONG
Inscription(s) LG741525875

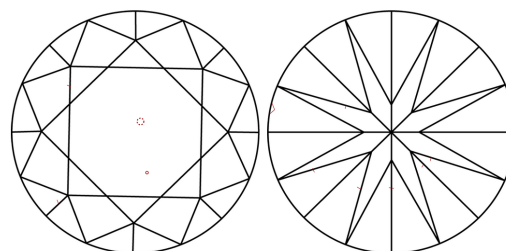
Comments: This Laboratory Grown Diamond was created by Chemical Vapor Deposition (CVD) growth process.
Indications of post-growth treatment.

PROPORTIONS



Sample Image Used

CLARITY CHARACTERISTICS



KEY TO SYMBOLS

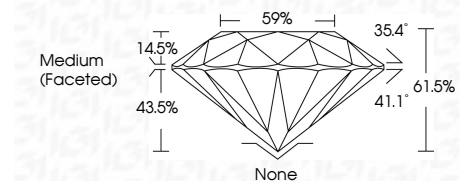
Red symbols indicate internal characteristics.
Green symbols indicate external characteristics.

COLOR

D E F G H I J Faint Very Light Light

CLARITY

FL IF VS 1-2 VS 2-3 SI 1-2 I 1-3
Flawless Internally Flawless Very Very Slightly Included Very Slightly Included Slightly Included Included



ADDITIONAL GRADING INFORMATION

Polish VERY GOOD
Symmetry EXCELLENT
Fluorescence STRONG
Inscription(s) LG741525875
Comments: This Laboratory Grown Diamond was created by Chemical Vapor Deposition (CVD) growth process.
Indications of post-growth treatment.



October 12, 2025
IGI Report No LG741525875
ROUND BRILLIANT
6.42 - 6.48 X 3.98 MM
1.02 CARAT
FANCY INTENSE PINK
VS 1
IDEAL
61.5%
59%
Medium (Faceted)
None
VERY GOOD
EXCELLENT
STRONG
None
VERY GOOD
EXCELLENT
STRONG
None
Comments: This Laboratory Grown Diamond was created by Chemical Vapor Deposition (CVD) growth process.
Indications of post-growth treatment.