



**ELECTRONIC COPY**

LG741525443  
Report verification at igi.org



October 12, 2025

IGI Report Number **LG741525443**

Description **LABORATORY GROWN DIAMOND**

Shape and Cutting Style **EMERALD CUT**

Measurements **14.63 X 9.92 X 6.74 MM**

**GRADING RESULTS**

Carat Weight **10.27 CARATS**

Color Grade **FANCY INTENSE PINK**

Clarity Grade **VS 1**

**LABORATORY GROWN DIAMOND REPORT**

October 12, 2025

IGI Report Number **LG741525443**

Description **LABORATORY GROWN DIAMOND**

Shape and Cutting Style **EMERALD CUT**

Measurements **14.63 X 9.92 X 6.74 MM**

**GRADING RESULTS**

Carat Weight **10.27 CARATS**

Color Grade **FANCY INTENSE PINK**

Clarity Grade **VS 1**

**ADDITIONAL GRADING INFORMATION**

Polish **EXCELLENT**

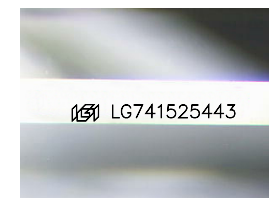
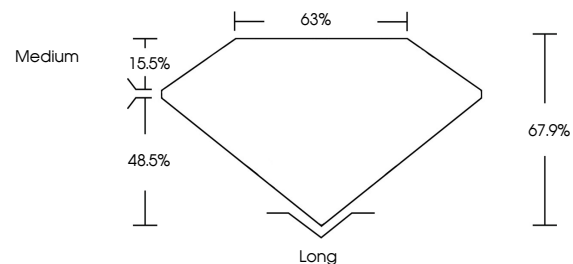
Symmetry **EXCELLENT**

Fluorescence **STRONG**

Inscription(s) **IGI LG741525443**

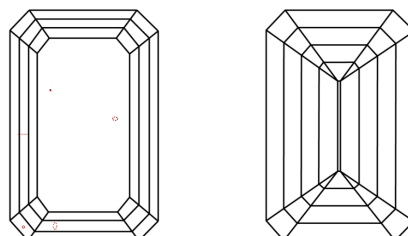
Comments: This Laboratory Grown Diamond was created by Chemical Vapor Deposition (CVD) growth process. Indications of post-growth treatment.

**PROPORTIONS**



Sample Image Used

**CLARITY CHARACTERISTICS**



**KEY TO SYMBOLS**

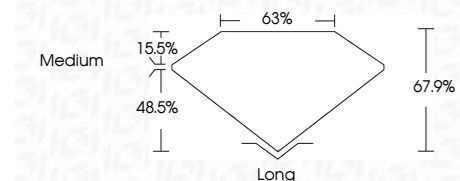
Red symbols indicate internal characteristics.  
Green symbols indicate external characteristics.

**COLOR**

D E F G H I J Faint Very Light Light

**CLARITY**

FL	IF	VS <sup>1-2</sup>	VS <sup>1-2</sup>	SI <sup>1-2</sup>	I <sup>1-3</sup>
Flawless	Internally Flawless	Very Very Slightly Included	Very Slightly Included	Slightly Included	Included



**ADDITIONAL GRADING INFORMATION**

Polish **EXCELLENT**

Symmetry **EXCELLENT**

Fluorescence **STRONG**

Inscription(s) **IGI LG741525443**

Comments: This Laboratory Grown Diamond was created by Chemical Vapor Deposition (CVD) growth process. Indications of post-growth treatment.



October 12, 2025  
IGI Report No LG741525443  
EMERALD CUT

10.27 CARATS  
FANCY INTENSE PINK

VS 1  
67.9%  
63%  
Medium

Long  
EXCELLENT  
EXCELLENT  
STRONG  
IGI LG741525443

Comments: This Laboratory Grown Diamond was created by Chemical Vapor Deposition (CVD) growth process. Indications of post-growth treatment.