



ELECTRONIC COPY

LG741523595
Report verification at igi.org



October 13, 2025

IGI Report Number **LG741523595**

Description **LABORATORY GROWN DIAMOND**

Shape and Cutting Style **TRIANGULAR BRILLIANT**

Measurements **9.05 X 9.38 X 4.36 MM**

GRADING RESULTS

Carat Weight **2.05 CARATS**

Color Grade **FANCY INTENSE ORANGE
PINKISH**

Clarity Grade **VVS 2**

October 13, 2025
IGI Report Number **LG741523595**
Description **LABORATORY GROWN DIAMOND**
Shape and Cutting Style **TRIANGULAR BRILLIANT**
Measurements **9.05 X 9.38 X 4.36 MM**

GRADING RESULTS

Carat Weight **2.05 CARATS**

Color Grade **FANCY INTENSE ORANGE
PINKISH**

Clarity Grade **VVS 2**

ADDITIONAL GRADING INFORMATION

Polish **EXCELLENT**

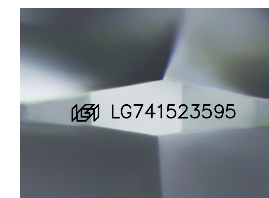
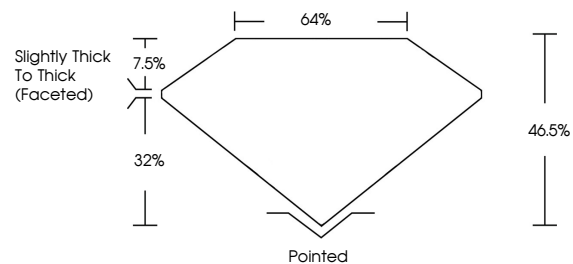
Symmetry **EXCELLENT**

Fluorescence **SLIGHT**

Inscription(s) **IGI LG741523595**

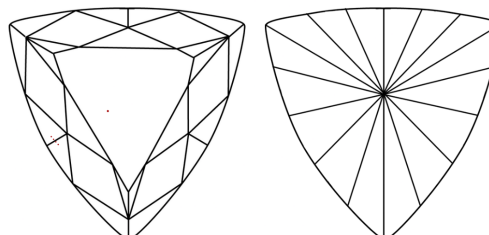
Comments: This Laboratory Grown Diamond was created by Chemical Vapor Deposition (CVD) growth process. Indications of post-growth treatment.

PROPORTIONS



Sample Image Used

CLARITY CHARACTERISTICS



KEY TO SYMBOLS

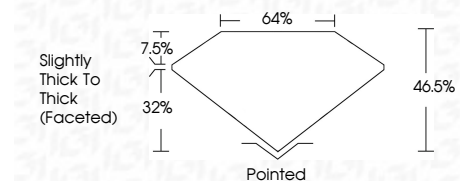
Red symbols indicate internal characteristics.
Green symbols indicate external characteristics.

COLOR

D E F G H I J Faint Very Light Light

CLARITY

FL	IF	VVS ¹⁻²	VS ¹⁻²	SI ¹⁻²	I ¹⁻³
Flawless	Internally Flawless	Very Very Slightly Included	Very Slightly Included	Slightly Included	Included



ADDITIONAL GRADING INFORMATION

Polish **EXCELLENT**

Symmetry **EXCELLENT**

Fluorescence **SLIGHT**

Inscription(s) **IGI LG741523595**

Comments: This Laboratory Grown Diamond was created by Chemical Vapor Deposition (CVD) growth process. Indications of post-growth treatment.



IGI



October 13, 2025
IGI Report No LG741523595
TRIANGULAR BRILLIANT
2.05 CARATS
Carat Weight
Color Grade **FANCY INTENSE ORANGE PINKISH**
Clarity Grade **VVS 2**
Depth 46.5%
Table 64%
Girdle Slightly Thick To Thick (Faceted)
Culet Pointed
Polish **EXCELLENT**
Symmetry **EXCELLENT**
Fluorescence **SLIGHT**
Inscription(s) **IGI LG741523595**
Comments: This Laboratory Grown Diamond was created by Chemical Vapor Deposition (CVD) growth process. Indications of post-growth treatment.