



**ELECTRONIC COPY**

## LABORATORY GROWN DIAMOND REPORT

|                         |                          |
|-------------------------|--------------------------|
| October 31, 2025        |                          |
| IGI Report Number       | LG741514821              |
| Description             | LABORATORY GROWN DIAMOND |
| Shape and Cutting Style | ROUND BRILLIANT          |
| Measurements            | 9.82 - 9.86 X 5.91 MM    |

## GRADING RESULTS

|               |             |
|---------------|-------------|
| Carat Weight  | 3.50 CARATS |
| Color Grade   | E           |
| Clarity Grade | VS 1        |
| Cut Grade     | IDEAL       |

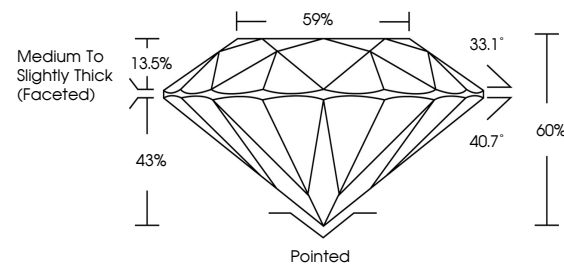
### ADDITIONAL GRADING INFORMATION

|                |   |
|----------------|---|
| Polish         | EXCELLENT   |
| Symmetry       | EXCELLENT   |
| Fluorescence   | NONE  |
| Inscription(s) |  LG741514821 |

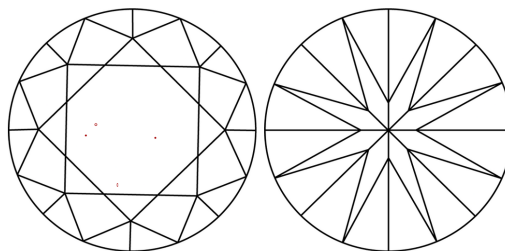
Comments: This Laboratory Grown Diamond was created by Chemical Vapor Deposition (CVD) growth process.  
Type IIa

LG741514821  
Report verification at [igi.org](https://igi.org)

## PROPORTIONS

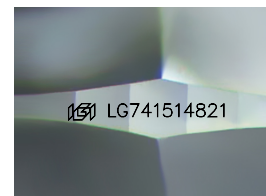


## CLARITY CHARACTERISTICS



## KEY TO SYMBOLS

Red symbols indicate internal characteristics.  
Green symbols indicate external characteristics.



Sample Image Used

## COLOR

D E F G H I J Faint Very Light Light

## CLARITY

| FL       | IF                  | VVS <sup>1-2</sup>          | VS <sup>1-2</sup>      | SI <sup>1-2</sup> | I <sup>1-3</sup> |
|----------|---------------------|-----------------------------|------------------------|-------------------|------------------|
| Flawless | Internally Flawless | Very Very Slightly Included | Very Slightly Included | Slightly Included | Included         |

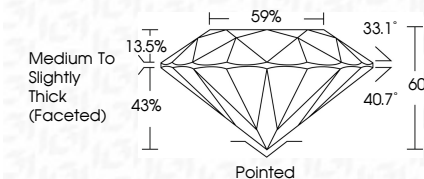
## LABORATORY GROWN DIAMOND REPORT



|                         |                          |
|-------------------------|--------------------------|
| October 31, 2025        |                          |
| IGI Report Number       | LG741514821              |
| Description             | LABORATORY GROWN DIAMOND |
| Shape and Cutting Style | ROUND BRILLIANT          |
| Measurements            | 9.82 - 9.86 X 5.91 MM    |

## GRADING RESULTS

|               |             |
|---------------|-------------|
| Carat Weight  | 3.50 CARATS |
| Color Grade   | E           |
| Clarity Grade | VS 1        |
| Cut Grade     | IDEAL       |



### ADDITIONAL GRADING INFORMATION

|   |   |
|---|---|
| Polish  | EXCELLENT   |
| Symmetry  | EXCELLENT   |
| Fluorescence  | NONE  |
| Inscription(s)  |  LG741514821 |
| <p>Comments: This Laboratory Grown Diamond was created by Chemical Vapor Deposition (CVD) growth process.</p> <p>Type IIa</p> |   |



© IGI 2020, International Gemological Institute

FD - 10 20



THIS DOCUMENT WAS PRODUCED WITH THE FOLLOWING SECURITY MEASURES: SPECIAL DOCUMENT PAPER, INK SCREENS, WATERMARK, BACKGROUND DESIGNS, HOLOGRAM AND OTHER SECURITY FEATURES NOT LISTED AND DO EXCEED DOCUMENT SECURITY INDUSTRY GUIDELINES

**www.igi.org**

October 31, 2025  
GI Report No LG741514821  
ROUND BRILLIANT

|                            |               |                                    |
|----------------------------|---------------|------------------------------------|
| 28 - 2.82 - 9.86 X 5.91 MM | Carat Weight  | 3.50 CARATS                        |
|                            | Color Grade   | E                                  |
|                            | Clarity Grade | VS 1                               |
|                            | Cut Grade     | IDPAL                              |
|                            | Depth         | 60%                                |
|                            | Table         | 59%                                |
|                            | Grade         | Medium To Slightly Thick (Faceted) |
|                            | Culet         | Pointed                            |
|                            | Polish        | EXCELLENT                          |
|                            | Symmetry      | EXCELLENT                          |
|                            | Fluorescence  | NONE                               |
|                            | Reference(s)  | 4mm (27.115) 4mm                   |

**Comments:**  
This Laboratory Grown Diamond was  
created by Chemical Vapor Deposition  
(CVD) growth process.