



ELECTRONIC COPY

LG741513885
Report verification at igi.org



October 30, 2025

IGI Report Number **LG741513885**

Description **LABORATORY GROWN DIAMOND**

Shape and Cutting Style **CUT CORNERED
RECTANGULAR MODIFIED
BRILLIANT**

Measurements **9.76 X 7.15 X 4.80 MM**

GRADING RESULTS

Carat Weight **3.00 CARATS**

Color Grade **FANCY INTENSE GREEN**

Clarity Grade **VS 1**

LABORATORY GROWN DIAMOND REPORT

October 30, 2025

IGI Report Number **LG741513885**

Description **LABORATORY GROWN DIAMOND**

Shape and Cutting Style **CUT CORNERED RECTANGULAR
MODIFIED BRILLIANT**

Measurements **9.76 X 7.15 X 4.80 MM**

GRADING RESULTS

Carat Weight **3.00 CARATS**

Color Grade **FANCY INTENSE GREEN**

Clarity Grade **VS 1**

ADDITIONAL GRADING INFORMATION

Polish **EXCELLENT**

Symmetry **EXCELLENT**

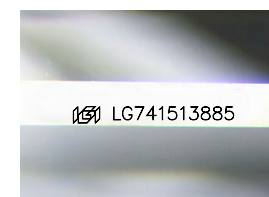
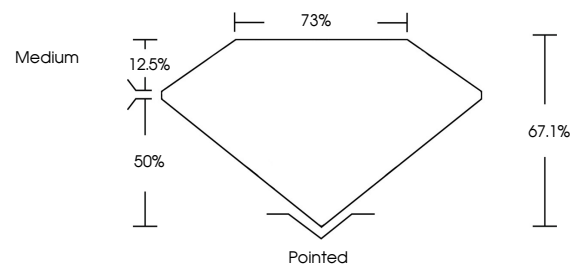
Fluorescence **VERY SLIGHT**

Inscription(s) **IGI LG741513885**

Comments: This Laboratory Grown Diamond was created by Chemical Vapor Deposition (CVD) growth process.

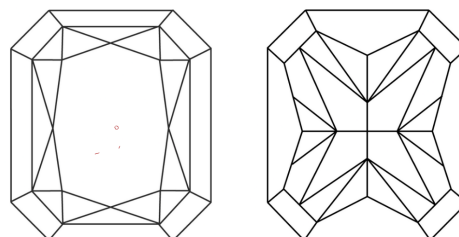
Indications of post-growth treatment.

PROPORTIONS



Sample Image Used

CLARITY CHARACTERISTICS



KEY TO SYMBOLS

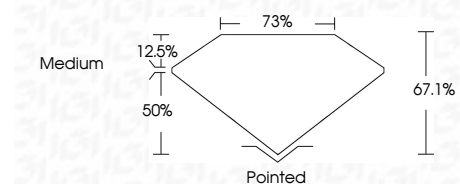
Red symbols indicate internal characteristics.
Green symbols indicate external characteristics.

COLOR

D E F G H I J Faint Very Light Light

CLARITY

FL	IF	VS ¹⁻²	VS ¹⁻²	SI ¹⁻²	I ¹⁻³
Flawless	Internally Flawless	Very Very Slightly Included	Very Slightly Included	Slightly Included	Included



ADDITIONAL GRADING INFORMATION

Polish **EXCELLENT**

Symmetry **EXCELLENT**

Fluorescence **VERY SLIGHT**

Inscription(s) **IGI LG741513885**

Comments: This Laboratory Grown Diamond was created by Chemical Vapor Deposition (CVD) growth process. Indications of post-growth treatment.



IGI



October 30, 2025
IGI Report No LG741513885
CUT CORNERED RECT. MODIFIED BRILLIANT

3.00 CARATS
Carat Weight
FANCY INTENSE GREEN
Color Grade

VS 1
Clarity Grade
67.1%
Depth
75%
Table
Medium
Girdle

Pointed
Culet
EXCELLENT
Polish
EXCELLENT
Symmetry
VERY SLIGHT
Fluorescence
IGI LG741513885
Inscription(s)

Comments: This Laboratory Grown Diamond was created by Chemical Vapor Deposition (CVD) growth process. Indications of post-growth treatment.